

## TEST REPORT

**IEC 62368-1**

**EN 62368-1**

**BS EN 62368-1**

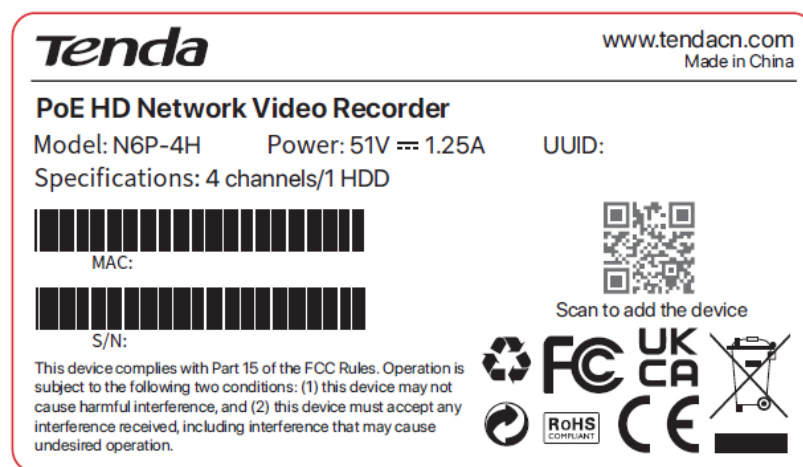
**Audio/video, information and communication technology equipment –**

### Part 1: Safety requirements

Report reference No .....	DG2210719-29899E-SF
Compiled by (+ signature) .....	Engineer: Jane Tao
Approved by (+ signature) .....	Team Leader: Robin He
Date of issue .....	2021-08-12
Testing laboratory .....	Bay Area Compliance Laboratories Corp. (Dongguan)
Address .....	No.12, Pulong East 1 <sup>st</sup> Road, Tangxia Town, Dongguan,Guangdong, China
Testing location .....	See above
Applicant's name .....	SHENZHEN TENDA TECHNOLOGY CO.,LTD
Address .....	6-8 Floor, Tower E3, No. 1001, Zhongshanyuan Road, Nanshan District, Shenzhen, China. 518052
Manufacturer's name .....	SHENZHEN TENDA TECHNOLOGY CO.,LTD
Address .....	6-8 Floor, Tower E3, No. 1001, Zhongshanyuan Road, Nanshan District, Shenzhen, China. 518052
Factory's name .....	--
Address .....	--
Standard .....	IEC 62368-1:2014 (Second Edition) EN 62368-1:2014+A11:2017 BS EN 62368-1:2014+A11:2017
Test sample(s) received .....	2021-07-19
Test in period .....	2021-07-21 to 2021-08-11
Procedure deviation .....	N/A
Non-standard test method .....	N/A

Type of test object .....	PoE HD Network Video Recorder
Trademark .....	<b>Tenda</b>
Model name.....	N6P-4H
Manufacturer .....	SHENZHEN TENDA TECHNOLOGY CO.,LTD
Rating .....	EUT input: 51.0V $\approx$ 1.25A supplied by external adapter (Adapter input: 100-240V~ 50/60Hz 1.5A output: 51.0V $\approx$ 1.25A)

Copy of marking plate:



Note:

- The CE marking and UKCA marking should be at least 5,0mm and WEEE symbol (if any) at least 7,0mm respectively in height.
- Manufacturers shall ensure that the equipment bears a type, batch or serial number or other element allowing its identification.
- Manufacturers shall indicate on the electrical equipment their name, registered trade name or registered trade mark and the postal address at which they can be contacted.
- Importers shall indicate on the electrical equipment their name, registered trade name or registered trade mark and the postal address at which they can be contacted.

<b>Test item particulars.....:</b>	
Classification of use by.....:	<input checked="" type="checkbox"/> Ordinary person <input type="checkbox"/> Instructed person <input type="checkbox"/> Skilled person <input checked="" type="checkbox"/> Children likely to be present
Supply Connection.....:	<input type="checkbox"/> AC Mains <input type="checkbox"/> DC Mains <input checked="" type="checkbox"/> External Circuit - not directly connected to the mains <input checked="" type="checkbox"/> ES1 <input type="checkbox"/> ES2 <input type="checkbox"/> ES3
Supply % Tolerance.....:	<input type="checkbox"/> +10%/-10% <input type="checkbox"/> +20%/-15% <input type="checkbox"/> +__%/-__% <input checked="" type="checkbox"/> None
Supply Connection - Type .....	<input type="checkbox"/> pluggable equipment type A – <input type="checkbox"/> non-detachable supply cord <input type="checkbox"/> appliance coupler <input type="checkbox"/> direct plug-in <input type="checkbox"/> mating connector <input type="checkbox"/> pluggable equipment type B – <input type="checkbox"/> non-detachable supply cord <input type="checkbox"/> appliance coupler <input type="checkbox"/> permanent connection <input type="checkbox"/> mating connector <input checked="" type="checkbox"/> other: <u>not directly connected to the mains</u>
Considered current rating of protective device as part of building or equipment installation.....:	__A; <input checked="" type="checkbox"/> N/A Installation location: <input type="checkbox"/> building; <input type="checkbox"/> equipment
Equipment mobility.....:	<input checked="" type="checkbox"/> movable <input type="checkbox"/> hand-held <input type="checkbox"/> transportable <input type="checkbox"/> stationary <input type="checkbox"/> for building-in <input type="checkbox"/> direct plug-in <input type="checkbox"/> rack-mounting <input checked="" type="checkbox"/> wall-mounted
Over voltage category (OVC) .....	<input type="checkbox"/> OVC I <input type="checkbox"/> OVC II <input type="checkbox"/> OVC III <input type="checkbox"/> OVC IV <input checked="" type="checkbox"/> other: <u>not directly connected to the mains</u>
Class of equipment.....:	<input type="checkbox"/> Class I <input type="checkbox"/> Class II <input checked="" type="checkbox"/> Class III
Access location.....:	<input type="checkbox"/> restricted access location <input checked="" type="checkbox"/> N/A
Pollution degree (PD) .....	<input type="checkbox"/> PD 1 <input checked="" type="checkbox"/> PD 2 <input type="checkbox"/> PD 3
Manufacturer's specified maximum operating ambient.....:	40°C
IP protection class .....	<input checked="" type="checkbox"/> IPX0 <input type="checkbox"/> IPX7
Power Systems .....	<input type="checkbox"/> TN <input type="checkbox"/> TT <input type="checkbox"/> IT - ____ V <sub>L-L</sub> <input checked="" type="checkbox"/> N/A
Altitude during operation (m) .....	<input checked="" type="checkbox"/> 2000 m or less <input type="checkbox"/> ____ m
Altitude of test laboratory (m) .....	<input checked="" type="checkbox"/> 2000 m or less <input type="checkbox"/> ____ m
Mass of equipment (kg).....:	<input checked="" type="checkbox"/> EUT: 1.317kg

**Possible test case verdicts.....:**

- test case does not apply to the test object.....: N(N/A)
- test object does meet the requirement.....: P(ass)
- test object does not meet the requirement.....: F(ail)

**General remarks:**

"(see remark #)" refers to a remark appended to the report.

(see appended table)" refers to a table appended to the report.

The test results presented in this report relate only to the object tested.

This report shall not be reproduced except in full without the written approval of the testing laboratory.

Throughout this report a ☐comma/ ☒point is used as the decimal separator.

**Summary of testing:**

1. All tests were performed at the worst case and all test results complied with the standard on the cover page.

**General product information:**

1. The product is PoE HD Network Video Recorder that supplied by 51.0Vdc from external adapter. And two USB port output load 5Vdc 0.5A at normal conditions.
2. The adapter output was considered as ES1 and PS2 circuits, the details see the adapter report.
3. EUT include a hard disk that only as a test accessory, it was not evaluated in report.
4. The product has 4-PoE ports, which Max. total output power is 40W, and Max. output power of a single port is 30W.
5. Before placing the products in the different countries, the manufacturer must ensure that: Operating instructions, Ratings Labels and Warnings Labels are in an Accepted or Official Language of the country in question; The equipment complies with the National Standards and/or Electrical Codes of the country, province or city or in question.
6. The test sample No.: DG2210719-29899E-SF-S1.

ENERGY SOURCE IDENTIFICATION AND CLASSIFICATION TABLE:	
<p>(Note 1: Identify the following six (6) energy source forms based on the origin of the energy.)            (Note 2: The identified classification e.g., ES2, TS1, should be with respect to its ability to cause pain or injury on the body or its ability to ignite a combustible material. Any energy source can be declared Class 3 as a worse case classification e.g. PS3, ES3.)</p>	
<p><b>Electrically-caused injury (Clause 5):</b>            (Note: Identify type of source, list sub-assembly or circuit designation and corresponding energy source classification)            Example: +5 V dc input ES1</p>	
Source of electrical energy	Corresponding classification (ES)
Adapter output	ES1
VDD54V_PoE	ES1
5Vdc USB1	ES1
5Vdc USB2	ES1
<p><b>Electrically-caused fire (Clause 6):</b>            (Note: List sub-assembly or circuit designation and corresponding energy source classification)            Example: Battery pack (maximum 85 watts): PS2</p>	
Source of power or PIS	Corresponding classification (PS)
Adapter output	PS2
VDD54V_PoE	PS2
5Vdc USB1	PS1
5Vdc USB2	PS1
<p><b>Injury caused by hazardous substances (Clause 7)</b>            (Note: Specify hazardous chemicals, whether produces ozone or other chemical construction not addressed as part of the component evaluation.)            Example: Liquid in filled component Glycol</p>	
Source of hazardous substances	Corresponding chemical
Button cell	Li-ion
--	--
<p><b>Mechanically-caused injury (Clause 8)</b>            (Note: List moving part(s), fan, special installations, etc. &amp; corresponding MS classification based on Table 35.)            Example: Wall mount unit MS2</p>	
Source of kinetic/mechanical energy	Corresponding classification (MS)
Sharp edges and corners do not cause pain or injury	MS1
Equipment mass < 7kg	MS1
Mounting height > 3m	MS3

ENERGY SOURCE IDENTIFICATION AND CLASSIFICATION TABLE:	
<b>Thermal burn injury (Clause 9)</b> (Note: Identify the surface or support, and corresponding energy source classification based on type of part, location, operating temperature and contact time in Table 38.) Example: Hand-held scanner – thermoplastic enclosure TS1	
Source of thermal energy	Corresponding classification (TS)
Accessible parts surface	TS1
--	--
<b>Radiation (Clause 10)</b> (Note: List the types of radiation present in the product and the corresponding energy source classification.) Example: DVD – Class 1 Laser Product RS1	
Type of radiation	Corresponding classification (RS)
Indicator light	RS1
--	--

ENERGY SOURCE DIAGRAM
Indicate which energy sources are included in the energy source diagram. Insert diagram below
<b>ES1, PS2, MS3, TS1 and RS1 for EUT</b> <input checked="" type="checkbox"/> ES <input checked="" type="checkbox"/> PS <input checked="" type="checkbox"/> MS <input checked="" type="checkbox"/> TS <input checked="" type="checkbox"/> RS

OVERVIEW OF EMPLOYED SAFEGUARDS				
Clause	Possible Hazard			
5.1	Electrically-caused injury			
Body Part (e.g. Ordinary)	Energy Source (ES3: Primary Filter circuit)	Safeguards		
		Basic	Supplementary	Reinforced (Enclosure)
Ordinary	ES1: Adapter output	--	--	--
Ordinary	ES1: VDD54V_PoE output	--	--	--
Ordinary	ES1: 5Vdc USB1 output	--	--	--
Ordinary	ES1: 5Vdc USB2 output	--	--	--
6.1	Electrically-caused fire			
Material part (e.g. mouse enclosure)	Energy Source (PS2: 100 Watt circuit)	Safeguards		
		Basic	Supplementary	Reinforced
Enclosure and PCB	PS2: Adapter output	See clause 6.3	See clause 6.4	--
Enclosure and PCB	PS2: VDD54V_PoE output	See clause 6.3	See clause 6.4	--

Enclosure	PS1: 5Vdc USB1 output	--	--	--
Enclosure	PS1: 5Vdc USB2 output	--	--	--
7.1	Injury caused by hazardous substances			
Body Part (e.g., skilled)	Energy Source (hazardous material)	Safeguards		
		Basic	Supplementary	Reinforced
Ordinary	Li-ion	Comply with Annex T and M	--	--
--	--	--	--	--
8.1	Mechanically-caused injury			
Body Part (e.g. Ordinary)	Energy Source (MS3: High Pressure Lamp)	Safeguards		
		Basic	Supplementary	Reinforced (Enclosure)
Ordinary	MS1: Equipment mass and Sharp edges and corners	--	--	--
Ordinary	MS3: Equipment mass < 1kg, Mounting height > 3m	--	--	Comply with the requirement of clause 8.7
9.1	Thermal Burn			
Body Part (e.g., Ordinary)	Energy Source (TS2)	Safeguards		
		Basic	Supplementary	Reinforced
Ordinary	TS1	--	--	--
--	--	--	--	--
10.1	Radiation			
Body Part (e.g., Ordinary)	Energy Source (Output from audio port)	Safeguards		
		Basic	Supplementary	Reinforced
Ordinary	RS1: Indicator light	--	--	--
--	--	--	--	--
Supplementary Information:				
(1) See attached energy source diagram for additional details.				
(2) "N" – Normal Condition; "A" – Abnormal Condition; "S" Single Fault.				

EN 62368-1/BS EN 62368/IEC 62368-1

Clause	Requirement + Test	Result - Remark	Verdict
<b>4</b>	<b>GENERAL REQUIREMENTS</b>		P
4.1.1	Acceptance of materials, components and subassemblies	(See appended table 4.1.2)	P
4.1.2	Use of components	Components comply with the requirements of this standard or, where specified in a requirements clause, with the safety aspects of the relevant IEC component standards. (See appended table 4.1.2)	P
4.1.3	Equipment design and construction	Parts of equipment that could cause injury shall not be accessible, and accessible parts shall not cause an injury.	P
4.1.15	Markings and instructions.....:	(See Annex F)	P
4.4.4	Safeguard robustness	See below.	P
4.4.4.2	Steady force tests.....:	(See Annex T.5)	P
4.4.4.3	Drop tests .....		N/A
4.4.4.4	Impact tests .....	(See Annex T.6)	P
4.4.4.5	Internal accessible safeguard enclosure and barrier tests.....:		N/A
4.4.4.6	Glass Impact tests .....		N/A
4.4.4.7	Thermoplastic material tests.....:	(See Annex T.8)	P
4.4.4.8	Air comprising a safeguard.....:		N/A
4.4.4.9	Accessibility and safeguard effectiveness	Complied.	P
4.5	Explosion	Tests as specified in Clause B.2, Clause B.3 , Clause B.4 and Annex M.	P
4.6	Fixing of conductors		N/A
4.6.1	Fix conductors not to defeat a safeguard		N/A
4.6.2	10 N force test applied to .....		N/A
4.7	Equipment for direct insertion into mains socket - outlets		N/A
4.7.2	Mains plug part complies with the relevant standard.....:		N/A
4.7.3	Torque (Nm) .....		N/A
4.8	Products containing coin/button cell batteries	Button cell batteries that were soldered in place.	N/A
4.8.2	Instructional safeguard		N/A
4.8.3	Battery Compartment Construction		N/A
	Means to reduce the possibility of children		—



EN 62368-1/BS EN 62368/IEC 62368-1

Clause	Requirement + Test	Result - Remark	Verdict
	removing the battery .....		
4.8.4	Battery Compartment Mechanical Tests .....		N/A
4.8.5	Battery Accessibility		N/A
4.9	Likelihood of fire or shock due to entry of conductive object .....	No openings.	N/A

<b>5</b>	<b>ELECTRICALLY-CAUSED INJURY</b>		<b>P</b>
5.2.1	Electrical energy source classifications .....	(See appended table 5.2)	P
5.2.2	ES1, ES2 and ES3 limits	ES1	P
5.2.2.2	Steady-state voltage and current .....	(See appended table 5.2)	P
5.2.2.3	Capacitance limits .....		N/A
5.2.2.4	Single pulse limits .....		N/A
5.2.2.5	Limits for repetitive pulses .....		N/A
5.2.2.6	Ringing signals .....		N/A
5.2.2.7	Audio signals .....		N/A
5.3	Protection against electrical energy sources	Only the ES1 exist for the EUT, no need any safeguard for ES1.	P
5.3.1	General Requirements for accessible parts to ordinary, instructed and skilled persons		N/A
5.3.2.1	Accessibility to electrical energy sources and safeguards		N/A
5.3.2.2	Contact requirements		N/A
	a) Test with test probe from Annex V .....		N/A
	b) Electric strength test potential (V) .....		N/A
	c) Air gap (mm) .....		N/A
5.3.2.4	Terminals for connecting stripped wire		N/A
5.4	Insulation materials and requirements		P
5.4.1.2	Properties of insulating material		N/A
5.4.1.3	Humidity conditioning .....		N/A
5.4.1.4	Maximum operating temperature for insulating materials .....	(See appended table 5.4.1.4)	P
5.4.1.5	Pollution degree .....	Degree 2	—
5.4.1.5.2	Test for pollution degree 1 environment and for an insulating compound		N/A
5.4.1.5.3	Thermal cycling		N/A
5.4.1.6	Insulation in transformers with varying dimensions		N/A
5.4.1.7	Insulation in circuits generating starting pulses		N/A

EN 62368-1/BS EN 62368/IEC 62368-1			
Clause	Requirement + Test	Result - Remark	Verdict
5.4.1.8	Determination of working voltage		N/A
5.4.1.9	Insulating surfaces		N/A
5.4.1.10	Thermoplastic parts on which conductive metallic parts are directly mounted		N/A
5.4.1.10.2	Vicat softening temperature..... :		N/A
5.4.1.10.3	Ball pressure ..... :		N/A
5.4.2	Clearances		N/A
5.4.2.2	Determining clearance using peak working voltage		N/A
5.4.2.3	Determining clearance using required withstand voltage ..... :		N/A
	a) a.c. mains transient voltage ..... :		—
	b) d.c. mains transient voltage ..... :		—
	c) external circuit transient voltage ..... :		—
	d) transient voltage determined by measurement ..... :		—
5.4.2.4	Determining the adequacy of a clearance using an electric strength test		N/A
5.4.2.5	Multiplication factors for clearances and test voltages ..... :		N/A
5.4.3	Creepage distances ..... :		N/A
5.4.3.1	General		N/A
5.4.3.3	Material Group ..... :		—
5.4.4	Solid insulation		N/A
5.4.4.2	Minimum distance through insulation ..... :		N/A
5.4.4.3	Insulation compound forming solid insulation		N/A
5.4.4.4	Solid insulation in semiconductor devices		N/A
5.4.4.5	Cemented joints		N/A
5.4.4.6	Thin sheet material		N/A
5.4.4.6.1	General requirements		N/A
5.4.4.6.2	Separable thin sheet material		N/A
	Number of layers (pcs) ..... :		N/A
5.4.4.6.3	Non-separable thin sheet material		N/A
5.4.4.6.4	Standard test procedure for non-separable thin sheet material ..... :		N/A
5.4.4.6.5	Mandrel test		N/A
5.4.4.7	Solid insulation in wound components		N/A

EN 62368-1/BS EN 62368/IEC 62368-1			
Clause	Requirement + Test	Result - Remark	Verdict
5.4.4.9	Solid insulation at frequencies >30 kHz .....		N/A
5.4.5	Antenna terminal insulation		N/A
5.4.5.1	General		N/A
5.4.5.2	Voltage surge test		N/A
	Insulation resistance (MΩ).....		—
5.4.6	Insulation of internal wire as part of supplementary safeguard .....		N/A
5.4.7	Tests for semiconductor components and for cemented joints		N/A
5.4.8	Humidity conditioning		N/A
	Relative humidity (%).....		—
	Temperature (°C) .....		—
	Duration (h) .....		—
5.4.9	Electric strength test .....		N/A
5.4.9.1	Test procedure for a solid insulation type test		N/A
5.4.9.2	Test procedure for routine tests		N/A
5.4.10	Protection against transient voltages between external circuit		N/A
5.4.10.1	Parts and circuits separated from external circuits		N/A
5.4.10.2	Test methods		N/A
5.4.10.2.1	General		N/A
5.4.10.2.2	Impulse test .....		N/A
5.4.10.2.3	Steady-state test.....		N/A
5.4.11	Insulation between external circuits and earthed circuitry .....		N/A
5.4.11.1	Exceptions to separation between external circuits and earth		N/A
5.4.11.2	Requirements		N/A
	Rated operating voltage $U_{op}$ (V) .....		—
	Nominal voltage $U_{peak}$ (V) .....		—
	Max increase due to variation $U_{sp}$ .....		—
	Max increase due to ageing $\Delta U_{sa}$ .....		—
	$U_{op} = U_{peak} + \Delta U_{sp} + \Delta U_{sa}$ .....		—
5.5	Components as safeguards		
5.5.1	General	No such components used.	N/A
5.5.2	Capacitors and RC units		N/A

EN 62368-1/BS EN 62368/IEC 62368-1			
Clause	Requirement + Test	Result - Remark	Verdict
5.5.2.1	General requirement		N/A
5.5.2.2	Safeguards against capacitor discharge after disconnection of a connector.....:		N/A
5.5.3	Transformers		N/A
5.5.4	Optocouplers		N/A
5.5.5	Relays		N/A
5.5.6	Resistors		N/A
5.5.7	SPD's		N/A
5.5.7.1	Use of an SPD connected to reliable earthing		N/A
5.5.7.2	Use of an SPD between mains and protective earth		N/A
5.5.8	Insulation between the mains and external circuit consisting of a coaxial cable.....:		N/A
5.6	Protective conductor		N/A
5.6.2	Requirement for protective conductors	Class III equipment.	N/A
5.6.2.1	General requirements		N/A
5.6.2.2	Colour of insulation		N/A
5.6.3	Requirement for protective earthing conductors		N/A
	Protective earthing conductor size (mm <sup>2</sup> ) .....		—
5.6.4	Requirement for protective bonding conductors		N/A
5.6.4.1	Protective bonding conductors		N/A
	Protective bonding conductor size (mm <sup>2</sup> ). .....		—
	Protective current rating (A) .....		—
5.6.4.3	Current limiting and overcurrent protective devices		N/A
5.6.5	Terminals for protective conductors		N/A
5.6.5.1	Requirement		N/A
	Conductor size (mm <sup>2</sup> ), nominal thread diameter (mm). .....		N/A
5.6.5.2	Corrosion		N/A
5.6.6	Resistance of the protective system		N/A
5.6.6.1	Requirements		N/A
5.6.6.2	Test Method Resistance (Ω).....:		N/A
5.6.7	Reliable earthing		N/A
5.7	Prospective touch voltage, touch current and protective conductor current		N/A
5.7.2	Measuring devices and networks		N/A

EN 62368-1/BS EN 62368/IEC 62368-1			
Clause	Requirement + Test	Result - Remark	Verdict
5.7.2.1	Measurement of touch current .....		N/A
5.7.2.2	Measurement of prospective touch voltage		N/A
5.7.3	Equipment set-up, supply connections and earth connections		N/A
	System of interconnected equipment (separate connections/single connection) .....		—
	Multiple connections to mains (one connection at a time/simultaneous connections) .....		—
5.7.4	Earthed conductive accessible parts.....		N/A
5.7.5	Protective conductor current		N/A
	Supply Voltage (V).....		—
	Measured current (mA).....		—
	Instructional Safeguard.....		N/A
5.7.6	Prospective touch voltage and touch current due to external circuits		N/A
5.7.6.1	Touch current from coaxial cables		N/A
5.7.6.2	Prospective touch voltage and touch current from external circuits		N/A
5.7.7	Summation of touch currents from external circuits		N/A
	a) Equipment with earthed external circuits Measured current (mA).....		N/A
	b) Equipment whose external circuits are not referenced to earth. Measured current (mA) .....		N/A

<b>6</b>	<b>ELECTRICALLY- CAUSED FIRE</b>		<b>P</b>
6.2	Classification of power sources (PS) and potential ignition sources (PIS)		<b>P</b>
6.2.2	Power source circuit classifications	PS2	<b>P</b>
6.2.2.1	General	See below.	<b>P</b>
6.2.2.2	Power measurement for worst-case load fault ... :	(See appended table 6.2.2)	<b>P</b>
6.2.2.3	Power measurement for worst-case power source fault .....	(See appended table 6.2.2)	<b>P</b>
6.2.2.4	PS1 .....	(See appended table 6.2.2)	<b>P</b>
6.2.2.5	PS2 .....	(See appended table 6.2.2)	<b>P</b>
6.2.2.6	PS3 .....		<b>N/A</b>
6.2.3	Classification of potential ignition sources		<b>P</b>
6.2.3.1	Arcing PIS .....	See appended table 6.2.3.1	<b>P</b>

EN 62368-1/BS EN 62368/IEC 62368-1			
Clause	Requirement + Test	Result - Remark	Verdict
6.2.3.2	Resistive PIS .....	See appended table 6.2.3.2	P
6.3	Safeguards against fire under normal operating and abnormal operating conditions		P
6.3.1 (a)	No ignition and attainable temperature value less than 90 % defined by ISO 871 or less than 300 °C for unknown materials .....	No ignition, no temperature more than 300 °C	P
6.3.1 (b)	Combustible materials outside fire enclosure	No such material.	N/A
6.4	Safeguards against fire under single fault conditions		P
6.4.1	Safeguard Method	Method by control of fire spread applied.	P
6.4.2	Reduction of the likelihood of ignition under single fault conditions in PS1 circuits		N/A
6.4.3	Reduction of the likelihood of ignition under single fault conditions in PS2 and PS3 circuits		N/A
6.4.3.1	General		N/A
6.4.3.2	Supplementary Safeguards		N/A
	Special conditions if conductors on printed boards are opened or peeled		N/A
6.4.3.3	Single Fault Conditions .....		N/A
	Special conditions for temperature limited by fuse		N/A
6.4.4	Control of fire spread in PS1 circuits		P
6.4.5	Control of fire spread in PS2 circuits	See below.	P
6.4.5.2	Supplementary safeguards .....	HB or better plastic enclosure and metal enclosure used. All components were mounted on the Min. V-1 PCB.	P
6.4.6	Control of fire spread in PS3 circuit		N/A
6.4.7	Separation of combustible materials from a PIS		N/A
6.4.7.1	General .....		N/A
6.4.7.2	Separation by distance		N/A
6.4.7.3	Separation by a fire barrier		N/A
6.4.8	Fire enclosures and fire barriers		N/A
6.4.8.1	Fire enclosure and fire barrier material properties		N/A
6.4.8.2.1	Requirements for a fire barrier		N/A
6.4.8.2.2	Requirements for a fire enclosure		N/A
6.4.8.3	Constructional requirements for a fire enclosure and a fire barrier		N/A
6.4.8.3.1	Fire enclosure and fire barrier openings		N/A
6.4.8.3.2	Fire barrier dimensions		N/A

EN 62368-1/BS EN 62368/IEC 62368-1			
Clause	Requirement + Test	Result - Remark	Verdict
6.4.8.3.3	Top Openings in Fire Enclosure: dimensions (mm) .....		N/A
	Needle Flame test		N/A
6.4.8.3.4	Bottom Openings in Fire Enclosure, condition met a), b) and/or c) dimensions (mm) .....		N/A
	Flammability tests for the bottom of a fire enclosure .....		N/A
6.4.8.3.5	Integrity of the fire enclosure, condition met: a), b) or c) .....		N/A
6.4.8.4	Separation of PIS from fire enclosure and fire barrier distance (mm) or flammability rating .....		N/A
6.5	Internal and external wiring		N/A
6.5.1	Requirements	No internal lead wire.	N/A
6.5.2	Cross-sectional area (mm <sup>2</sup> ) .....		—
6.5.3	Requirements for interconnection to building wiring .....		N/A
6.6	Safeguards against fire due to connection to additional equipment	USB output	P
	External port limited to PS2 or complies with Clause Q.1	(See appended table 6.2.2)	P

<b>7</b>	<b>INJURY CAUSED BY HAZARDOUS SUBSTANCES</b>		P
7.2	Reduction of exposure to hazardous substances	See Annex T	P
7.3	Ozone exposure		N/A
7.4	Use of personal safeguards (PPE)		N/A
	Personal safeguards and instructions .....		—
7.5	Use of instructional safeguards and instructions		N/A
	Instructional safeguard (ISO 7010) .....		—
7.6	Batteries .....	See Annex M	P

<b>8</b>	<b>MECHANICALLY-CAUSED INJURY</b>		P
8.1	General	See below.	P
8.2	Mechanical energy source classifications	MS3	P
8.3	Safeguards against mechanical energy sources		N/A
8.4	Safeguards against parts with sharp edges and corners		P
8.4.1	Safeguards		N/A

EN 62368-1/BS EN 62368/IEC 62368-1			
Clause	Requirement + Test	Result - Remark	Verdict
8.5	Safeguards against moving parts	No moving parts	N/A
8.5.1	MS2 or MS3 part required to be accessible for the function of the equipment		N/A
8.5.2	Instructional Safeguard .....		—
8.5.4	Special categories of equipment comprising moving parts		N/A
8.5.4.1	Large data storage equipment		N/A
8.5.4.2	Equipment having electromechanical device for destruction of media		N/A
8.5.4.2.1	Safeguards and Safety Interlocks .....		N/A
8.5.4.2.2	Instructional safeguards against moving parts		N/A
	Instructional Safeguard .....		—
8.5.4.2.3	Disconnection from the supply		N/A
8.5.4.2.4	Probe type and force (N) .....		N/A
8.5.5	High Pressure Lamps		N/A
8.5.5.1	Energy Source Classification		N/A
8.5.5.2	High Pressure Lamp Explosion Test.....		N/A
8.6	Stability	Equipment mass < 7kg, MS1	N/A
8.6.1	Product classification	MS1	N/A
	Instructional Safeguard .....		—
8.6.2	Static stability		N/A
8.6.2.2	Static stability test		N/A
	Applied Force .....		—
8.6.2.3	Downward Force Test		N/A
8.6.3	Relocation stability test		N/A
	Unit configuration during 10° tilt.....		—
8.6.4	Glass slide test		N/A
8.6.5	Horizontal force test (Applied Force).....		N/A
	Position of feet or movable parts.....		—
8.7	Equipment mounted to wall or ceiling	MS3	P
8.7.1	Mounting Means (Length of screws (mm) and mounting surface) .....	Test 2 used.	P



EN 62368-1/BS EN 62368/IEC 62368-1

Clause	Requirement + Test	Result - Remark	Verdict
8.7.2	Direction and applied force .....	Two attachment points in the mounting system. Each point used 6N, for 1 min, after test, no hazards. Then used a horizontal force of 50 N for 60 s, after test, no hazards	P
8.8	Handles strength		N/A
8.8.1	Classification		N/A
8.8.2	Applied Force .....		N/A
8.9	Wheels or casters attachment requirements		N/A
8.9.1	Classification		N/A
8.9.2	Applied force .....		—
8.10	Carts, stands and similar carriers		N/A
8.10.1	General		N/A
8.10.2	Marking and instructions		N/A
	Instructional Safeguard .....		—
8.10.3	Cart, stand or carrier loading test and compliance		N/A
	Applied force .....		—
8.10.4	Cart, stand or carrier impact test		N/A
8.10.5	Mechanical stability		N/A
	Applied horizontal force (N) .....		—
8.10.6	Thermoplastic temperature stability (°C) .....		N/A
8.11	Mounting means for rack mounted equipment		N/A
8.11.1	General		N/A
8.11.2	Product Classification		N/A
8.11.3	Mechanical strength test, variable <i>N</i> .....		N/A
8.11.4	Mechanical strength test 250N, including end stops		N/A
8.12	Telescoping or rod antennas .....		N/A
	Button/Ball diameter (mm) .....		—

<b>9</b>	<b>THERMAL BURN INJURY</b>		<b>P</b>
9.2	Thermal energy source classifications	The EUT considered be as TS1, refer to the appended table 5.4.1.5, 6.3.2, 9.0, B.2.6, B.2.7 and B3, B4	P
9.3	Safeguard against thermal energy sources	TS1 no need to use any protection for the EUT.	N/A
9.4	Requirements for safeguards		N/A

EN 62368-1/BS EN 62368/IEC 62368-1			
Clause	Requirement + Test	Result - Remark	Verdict
9.4.1	Equipment safeguard		N/A
9.4.2	Instructional safeguard .....		N/A

<b>10</b>	<b>RADIATION</b>		<b>P</b>
10.2	Radiation energy source classification	See below	P
10.2.1	General classification	Indicator light, RS1	P
10.3	Protection against laser radiation		N/A
	Laser radiation that exists equipment:		—
	Normal, abnormal, single-fault..... :		N/A
	Instructional safeguard .....		—
	Tool..... :		—
10.4	Protection against visible, infrared, and UV radiation	See below	N/A
10.4.1	General	Indicator light, RS1	N/A
10.4.1.a)	RS3 for Ordinary and instructed persons .....		N/A
10.4.1.b)	RS3 accessible to a skilled person..... :		N/A
	Personal safeguard (PPE) instructional safeguard..... :		—
10.4.1.c)	Equipment visible, IR, UV does not exceed RS1 . :		N/A
10.4.1.d)	Normal, abnormal, single-fault conditions .....		N/A
10.4.1.e)	Enclosure material employed as safeguard is opaque..... :		N/A
10.4.1.f)	UV attenuation .....		N/A
10.4.1.g)	Materials resistant to degradation UV .....		N/A
10.4.1.h)	Enclosure containment of optical radiation..... :		N/A
10.4.1.i)	Exempt Group under normal operating conditions..... :		N/A
10.4.2	Instructional safeguard .....		N/A
10.5	Protection against x-radiation		N/A
10.5.1	X- radiation energy source that exists equipment :		N/A
	Normal, abnormal, single fault conditions		N/A
	Equipment safeguards..... :		N/A
	Instructional safeguard for skilled person..... :		N/A
10.5.3	Most unfavourable supply voltage to give maximum radiation .....		—
	Abnormal and single-fault condition .....		N/A

EN 62368-1/BS EN 62368/IEC 62368-1

Clause	Requirement + Test	Result - Remark	Verdict
	Maximum radiation (pA/kg)..... :		N/A
10.6	Protection against acoustic energy sources		N/A
10.6.1	General		N/A
10.6.2	Classification		N/A
	Acoustic output, dB(A) ..... :		N/A
	Output voltage, unweighted r.m.s..... :		N/A
10.6.4	Protection of persons		N/A
	Instructional safeguards ..... :		N/A
	Equipment safeguard prevent ordinary person to RS2..... :		—
	Means to actively inform user of increase sound pressure..... :		—
	Equipment safeguard prevent ordinary person to RS2..... :		—
10.6.5	Requirements for listening devices (headphones, earphones, etc.)		N/A
10.6.5.1	Corded passive listening devices with analog input		N/A
	Input voltage with 94 dB(A) $L_{Aeq}$ acoustic pressure output..... :		—
10.6.5.2	Corded listening devices with digital input		N/A
	Maximum dB(A)..... :		—
10.6.5.3	Cordless listening device		N/A
	Maximum dB(A)..... :		—

<b>B</b>	<b>NORMAL OPERATING CONDITION TESTS, ABNORMAL OPERATING CONDITION TESTS AND SINGLE FAULT CONDITION TESTS</b>		P
B.2	Normal Operating Conditions		P
B.2.1	General requirements ..... :	(See Test Item Particulars and appended test tables)	P
	Audio Amplifiers and equipment with audio amplifiers ..... :		N/A
B.2.3	Supply voltage and tolerances		N/A
B.2.5	Input test..... :	(See appended table B.2.5)	P
B.3	Simulated abnormal operating conditions		P
B.3.1	General requirements ..... :		P
B.3.2	Covering of ventilation openings		N/A

EN 62368-1/BS EN 62368/IEC 62368-1			
Clause	Requirement + Test	Result - Remark	Verdict
B.3.3	D.C. mains polarity test		N/A
B.3.4	Setting of voltage selector .....		N/A
B.3.5	Maximum load at output terminals .....	(See appended table B.3)	P
B.3.6	Reverse battery polarity		N/A
B.3.7	Abnormal operating conditions as specified in Clause E.2.		N/A
B.3.8	Safeguards functional during and after abnormal operating conditions		P
B.4	Simulated single fault conditions		P
B.4.2	Temperature controlling device open or short-circuited .....	No such components	N/A
B.4.3	Motor tests	No such components	N/A
B.4.3.1	Motor blocked or rotor locked increasing the internal ambient temperature .....		N/A
B.4.4	Short circuit of functional insulation	See below.	P
B.4.4.1	Short circuit of clearances for functional insulation	The functional insulation was short-circuited. (See appended table B.4)	P
B.4.4.2	Short circuit of creepage distances for functional insulation	The functional insulation was short-circuited. (See appended table B.4)	P
B.4.4.3	Short circuit of functional insulation on coated printed boards		N/A
B.4.5	Short circuit and interruption of electrodes in tubes and semiconductors		N/A
B.4.6	Short circuit or disconnect of passive components	(See appended table B.4)	P
B.4.7	Continuous operation of components		N/A
B.4.8	Class 1 and Class 2 energy sources within limits during and after single fault conditions	(See appended table B.4)	P
B.4.9	Battery charging under single fault conditions .....	See Annex M	P
<b>C</b>	<b>UV RADIATION</b>		N/A
C.1	Protection of materials in equipment from UV radiation		N/A
C.1.2	Requirements		N/A
C.1.3	Test method		N/A
C.2	UV light conditioning test		N/A
C.2.1	Test apparatus		N/A
C.2.2	Mounting of test samples		N/A

EN 62368-1/BS EN 62368/IEC 62368-1			
Clause	Requirement + Test	Result - Remark	Verdict
C.2.3	Carbon-arc light-exposure apparatus		N/A
C.2.4	Xenon-arc light exposure apparatus		N/A
<b>D</b>	<b>TEST GENERATORS</b>		N/A
D.1	Impulse test generators		N/A
D.2	Antenna interface test generator		N/A
D.3	Electronic pulse generator		N/A
<b>E</b>	<b>TEST CONDITIONS FOR EQUIPMENT CONTAINING AUDIO AMPLIFIERS</b>		N/A
E.1	Audio amplifier normal operating conditions		N/A
	Audio signal voltage (V) .....		—
	Rated load impedance ( $\Omega$ ) .....		—
E.2	Audio amplifier abnormal operating conditions		N/A
<b>F</b>	<b>EQUIPMENT MARKINGS, INSTRUCTIONS, AND INSTRUCTIONAL SAFEGUARDS</b>		P
F.1	General requirements	See below.	P
	Instructions – Language .....	English	—
F.2	Letter symbols and graphical symbols	Complied	P
F.2.1	Letter symbols according to IEC 60027-1	Complied	P
F.2.2	Graphic symbols IEC, ISO or manufacturer specific	Complied	P
F.3	Equipment markings		P
F.3.1	Equipment marking locations	Complied	P
F.3.2	Equipment identification markings	See below.	P
F.3.2.1	Manufacturer identification .....	See marking plate.	—
F.3.2.2	Model identification .....	See marking plate.	—
F.3.3	Equipment rating markings		P
F.3.3.1	Equipment with direct connection to mains		N/A
F.3.3.2	Equipment without direct connection to mains	Not directly connected to the mains	P
F.3.3.3	Nature of supply voltage .....	==	—
F.3.3.4	Rated voltage .....	51.0V	—
F.3.3.4	Rated frequency .....		—
F.3.3.6	Rated current or rated power .....	1.25A	—
F.3.3.7	Equipment with multiple supply connections		N/A
F.3.4	Voltage setting device		N/A
F.3.5	Terminals and operating devices		N/A

EN 62368-1/BS EN 62368/IEC 62368-1			
Clause	Requirement + Test	Result - Remark	Verdict
F.3.5.1	Mains appliance outlet and socket-outlet markings.....:		N/A
F.3.5.2	Switch position identification marking .....		N/A
F.3.5.3	Replacement fuse identification and rating markings.....:		N/A
F.3.5.4	Replacement battery identification marking .....		N/A
F.3.5.5	Terminal marking location		N/A
F.3.6	Equipment markings related to equipment classification		N/A
F.3.6.1	Class I Equipment		N/A
F.3.6.1.1	Protective earthing conductor terminal		N/A
F.3.6.1.2	Neutral conductor terminal		N/A
F.3.6.1.3	Protective bonding conductor terminals		N/A
F.3.6.2	Class II equipment (IEC 60417-5172)		N/A
F.3.6.2.1	Class II equipment with or without functional earth		N/A
F.3.6.2.2	Class II equipment with functional earth terminal marking		N/A
F.3.7	Equipment IP rating marking .....	IPX0	—
F.3.8	External power supply output marking		N/A
F.3.9	Durability, legibility and permanence of marking	The markings on the equipment is durable and legible, and shall be easily discernable under normal lighting conditions.	P
F.3.10	Test for permanence of markings	Rubbing the marking by hand for 15 s with piece of cloth soaked with water and, at a different place for on a second sample. For 15 s with a piece of cloth soaked with petroleum spirit .after this test, marking is legible and can not be easily possible to remove marking and show no curling.	P
F.4	Instructions		P
	a) Equipment for use in locations where children not likely to be present - marking		N/A
	b) Instructions given for installation or initial use		P
	c) Equipment intended to be fastened in place		N/A
	d) Equipment intended for use only in restricted access area		N/A

EN 62368-1/BS EN 62368/IEC 62368-1			
Clause	Requirement + Test	Result - Remark	Verdict
	e) Audio equipment terminals classified as ES3 and other equipment with terminals marked in accordance F.3.6.1		N/A
	f) Protective earthing employed as safeguard		N/A
	g) Protective earthing conductor current exceeding ES 2 limits		N/A
	h) Symbols used on equipment		P
	i) Permanently connected equipment not provided with all-pole mains switch		N/A
	j) Replaceable components or modules providing safeguard function		N/A
F.5	Instructional safeguards		N/A
	Where “instructional safeguard” is referenced in the test report it specifies the required elements, location of marking and/or instruction		N/A
<b>G</b>	<b>COMPONENTS</b>		N/A
<b>G.1</b>	<b>Switches</b>		N/A
G.1.1	General requirements	No such components.	N/A
G.1.2	Ratings, endurance, spacing, maximum load		N/A
<b>G.2</b>	<b>Relays</b>		N/A
G.2.1	General requirements	No such components.	N/A
G.2.2	Overload test		N/A
G.2.3	Relay controlling connectors supply power		N/A
G.2.4	Mains relay, modified as stated in G.2		N/A
<b>G.3</b>	<b>Protection Devices</b>		N/A
G.3.1	Thermal cut-offs	No such components.	N/A
G.3.1.1a) &b)	Thermal cut-outs separately approved according to IEC 60730 with conditions indicated in a) & b)		N/A
G.3.1.1c)	Thermal cut-outs tested as part of the equipment as indicated in c)		N/A
G.3.1.2	Thermal cut-off connections maintained and secure		N/A
G.3.2	Thermal links		N/A
G.3.2.1a)	Thermal links separately tested with IEC 60691		N/A
G.3.2.1b)	Thermal links tested as part of the equipment		N/A
	Aging hours (H) .....		—
	Single Fault Condition .....		—
	Test Voltage (V) and Insulation Resistance ( $\Omega$ )...		—

EN 62368-1/BS EN 62368/IEC 62368-1			
Clause	Requirement + Test	Result - Remark	Verdict
G.3.3	PTC Thermistors		N/A
G.3.4	Overcurrent protection devices		N/A
G.3.5	Safeguards components not mentioned in G.3.1 to G.3.5		N/A
G.3.5.1	Non-resettable devices suitably rated and marking provided		N/A
G.3.5.2	Single faults conditions .....		N/A
<b>G.4</b>	<b>Connectors</b>		N/A
G.4.1	Spacings	No such components.	N/A
G.4.2	Mains connector configuration .....		N/A
G.4.3	Plug is shaped that insertion into mains socket-outlets or appliance coupler is unlikely		N/A
<b>G.5</b>	<b>Wound Components</b>		N/A
G.5.1	Wire insulation in wound components .....	No such components.	N/A
G.5.1.2 a)	Two wires in contact inside wound component, angle between 45° and 90°		N/A
G.5.1.2 b)	Construction subject to routine testing		N/A
G.5.2	Endurance test on wound components		N/A
G.5.2.1	General test requirements		N/A
G.5.2.2	Heat run test		N/A
	Time (s) .....		—
	Temperature (°C) .....		—
G.5.2.3	Wound Components supplied by mains		N/A
<b>G.5.3</b>	<b>Transformers</b>		N/A
G.5.3.1	Requirements applied (IEC61204-7, IEC61558-1/-2, and/or IEC62368-1) .....	No such components.	N/A
	Position.....		—
	Method of protection .....		—
G.5.3.2	Insulation		N/A
	Protection from displacement of windings .....		—
G.5.3.3	Overload test.....		N/A
G.5.3.3.1	Test conditions		N/A
G.5.3.3.2	Winding Temperatures testing in the unit		N/A
G.5.3.3.3	Winding Temperatures - Alternative test method		N/A
<b>G.5.4</b>	<b>Motors</b>		N/A
G.5.4.1	General requirements	No such components	N/A



EN 62368-1/BS EN 62368/IEC 62368-1			
Clause	Requirement + Test	Result - Remark	Verdict
	Position .....		—
G.5.4.2	Test conditions		N/A
G.5.4.3	Running overload test		N/A
G.5.4.4	Locked-rotor overload test		N/A
	Test duration (days) .....		—
G.5.4.5	Running overload test for d.c. motors in secondary circuits		N/A
G.5.4.5.2	Tested in the unit		N/A
	Electric strength test (V) .....		—
G.5.4.5.3	Tested on the Bench - Alternative test method; test time (h) .....		N/A
	Electric strength test (V) .....		—
G.5.4.6	Locked-rotor overload test for d.c. motors in secondary circuits		N/A
G.5.4.6.2	Tested in the unit		N/A
	Maximum Temperature .....		N/A
	Electric strength test (V) .....		N/A
G.5.4.6.3	Tested on the bench - Alternative test method; test time (h) .....		N/A
	Electric strength test (V) .....		N/A
G.5.4.7	Motors with capacitors		N/A
G.5.4.8	Three-phase motors		N/A
G.5.4.9	Series motors		N/A
	Operating voltage .....		—
<b>G.6</b>	<b>Wire Insulation</b>		N/A
G.6.1	General	No such components.	N/A
G.6.2	Solvent-based enamel wiring insulation		N/A
<b>G.7</b>	<b>Mains supply cords</b>		N/A
G.7.1	General requirements	No such components.	N/A
	Type .....		—
	Rated current (A) .....		—
	Cross-sectional area (mm <sup>2</sup> ), (AWG) .....		—
G.7.2	Compliance and test method		N/A
G.7.3	Cord anchorages and strain relief for non-detachable power supply cords		N/A
G.7.3.2	Cord strain relief		N/A

EN 62368-1/BS EN 62368/IEC 62368-1			
Clause	Requirement + Test	Result - Remark	Verdict
G.7.3.2.1	Requirements		N/A
	Strain relief test force (N) ..... :		—
G.7.3.2.2	Strain relief mechanism failure		N/A
G.7.3.2.3	Cord sheath or jacket position, distance (mm).... :		—
G.7.3.2.4	Strain relief comprised of polymeric material		N/A
G.7.4	Cord Entry ..... :		N/A
G.7.5	Non-detachable cord bend protection		N/A
G.7.5.1	Requirements		N/A
G.7.5.2	Mass (g) ..... :		—
	Diameter (m) ..... :		—
	Temperature (°C) ..... :		—
G.7.6	Supply wiring space		N/A
G.7.6.2	Stranded wire		N/A
G.7.6.2.1	Test with 8 mm strand		N/A
<b>G.8</b>	<b>Varistors</b>		N/A
G.8.1	General requirements	No such components.	N/A
G.8.2	Safeguard against shock		N/A
G.8.3	Safeguard against fire		N/A
G.8.3.2	Varistor overload test ..... :		N/A
G.8.3.3	Temporary overvoltage ..... :		N/A
<b>G.9</b>	<b>Integrated Circuit (IC) Current Limiters</b>		N/A
G.9.1 a)	Manufacturer defines limit at max. 5A.	No such components.	N/A
G.9.1 b)	Limiters do not have manual operator or reset		N/A
G.9.1 c)	Supply source does not exceed 250 VA ..... :		—
G.9.1 d)	IC limiter output current (max. 5A) ..... :		—
G.9.1 e)	Manufacturers' defined drift ..... :		—
G.9.2	Test Program 1		N/A
G.9.3	Test Program 2		N/A
G.9.4	Test Program 3		N/A
<b>G.10</b>	<b>Resistors</b>		N/A
G.10.1	General requirements	No such components.	N/A
G.10.2	Resistor test		N/A
G.10.3	Test for resistors serving as safeguards between the mains and an external circuit consisting of a coaxial cable		N/A

EN 62368-1/BS EN 62368/IEC 62368-1			
Clause	Requirement + Test	Result - Remark	Verdict
G.10.3.1	General requirements		N/A
G.10.3.2	Voltage surge test		N/A
G.10.3.3	Impulse test		N/A
<b>G.11</b>	<b>Capacitor and RC units</b>		N/A
G.11.1	General requirements	No such components.	N/A
G.11.2	Conditioning of capacitors and RC units		N/A
G.11.3	Rules for selecting capacitors		N/A
<b>G.12</b>	<b>Optocouplers</b>		N/A
	Optocouplers comply with IEC 60747-5-5:2007 Spacing or Electric Strength Test (specify option and test results).....:	No such components.	N/A
	Type test voltage Vini .....		—
	Routine test voltage, Vini,b .....		—
<b>G.13</b>	<b>Printed boards</b>		N/A
G.13.1	General requirements	No such components.	N/A
G.13.2	Uncoated printed boards		N/A
G.13.3	Coated printed boards		N/A
G.13.4	Insulation between conductors on the same inner surface		N/A
	Compliance with cemented joint requirements (Specify construction).....:		—
G.13.5	Insulation between conductors on different surfaces		N
	Distance through insulation.....:		N
	Number of insulation layers (pcs) .....		—
G.13.6	Tests on coated printed boards		N/A
G.13.6.1	Sample preparation and preliminary inspection		N/A
G.13.6.2a)	Thermal conditioning		N/A
G.13.6.2b)	Electric strength test		N/A
G.13.6.2c)	Abrasion resistance test		N/A
<b>G.14</b>	<b>Coating on components terminals</b>		N/A
G.14.1	Requirements .....	No such components.	N/A
<b>G.15</b>	<b>Liquid filled components</b>		N/A
G.15.1	General requirements	No such components.	N/A
G.15.2	Requirements		N/A
G.15.3	Compliance and test methods		N/A

EN 62368-1/BS EN 62368/IEC 62368-1			
Clause	Requirement + Test	Result - Remark	Verdict
G.15.3.1	Hydrostatic pressure test		N/A
G.15.3.2	Creep resistance test		N/A
G.15.3.3	Tubing and fittings compatibility test		N/A
G.15.3.4	Vibration test		N/A
G.15.3.5	Thermal cycling test		N/A
G.15.3.6	Force test		N/A
G.15.4	Compliance		N/A
<b>G.16</b>	<b>IC including capacitor discharge function (ICX)</b>		N/A
a)	Humidity treatment in accordance with sc5.4.8 – 120 hours		N/A
b)	Impulse test using circuit 2 with $U_c$ =to transient voltage .....		N/A
C1)	Application of ac voltage at 110% of rated voltage for 2.5 minutes		N/A
C2)	Test voltage .....		—
D1)	10,000 cycles on and off using capacitor with smallest capacitance resistor with largest resistance specified by manufacturer		N/A
D2)	Capacitance .....		—
D3)	Resistance .....		—
<b>H</b>	<b>CRITERIA FOR TELEPHONE RINGING SIGNALS</b>		N/A
H.1	General	No ringing signals.	N/A
H.2	Method A		N/A
H.3	Method B		N/A
H.3.1	Ringing signal		N/A
H.3.1.1	Frequency (Hz) .....		—
H.3.1.2	Voltage (V) .....		—
H.3.1.3	Cadence; time (s) and voltage (V) .....		—
H.3.1.4	Single fault current (mA): .....		—
H.3.2	Tripping device and monitoring voltage .....		N/A
H.3.2.1	Conditions for use of a tripping device or a monitoring voltage complied with		N/A
H.3.2.2	Tripping device		N/A
H.3.2.3	Monitoring voltage (V) .....		—
<b>J</b>	<b>INSULATED WINDING WIRES FOR USE WITHOUT INTERLEAVED INSULATION</b>		N/A
	General requirements		N/A

EN 62368-1/BS EN 62368/IEC 62368-1			
Clause	Requirement + Test	Result - Remark	Verdict
<b>K</b>	<b>SAFETY INTERLOCKS</b>		N/A
K.1	General requirements	No such components.	N/A
K.2	Components of safety interlock safeguard mechanism .....		N/A
K.3	Inadvertent change of operating mode		N/A
K.4	Interlock safeguard override		N/A
K.5	Fail-safe		N/A
	Compliance .....		N/A
K.6	Mechanically operated safety interlocks		N/A
K.6.1	Endurance requirement		N/A
K.6.2	Compliance and Test method .....		N/A
K.7	Interlock circuit isolation		N/A
K.7.1	Separation distance for contact gaps & interlock circuit elements (type and circuit location) .....		N/A
K.7.2	Overload test, Current (A) .....		N/A
K.7.3	Endurance test		N/A
K.7.4	Electric strength test .....		N/A
<b>L</b>	<b>DISCONNECT DEVICES</b>		N/A
L.1	General requirements	No such components.	N/A
L.2	Permanently connected equipment		N/A
L.3	Parts that remain energized		N/A
L.4	Single phase equipment		N/A
L.5	Three-phase equipment		N/A
L.6	Switches as disconnect devices		N/A
L.7	Plugs as disconnect devices		N/A
L.8	Multiple power sources		N/A
<b>M</b>	<b>EQUIPMENT CONTAINING BATTERIES AND THEIR PROTECTION CIRCUITS</b>		P
M.1	General requirements	Button cell used.	P
M.2	Safety of batteries and their cells		P
M.2.1	Requirements		P
M.2.2	Compliance and test method (identify method) .. :	Button cell comply with UL 1642	P
M.3	Protection circuits		P
M.3.1	Requirements		P
M.3.2	Tests		P
	- Overcharging of a rechargeable battery		N/A

EN 62368-1/BS EN 62368/IEC 62368-1			
Clause	Requirement + Test	Result - Remark	Verdict
	- Unintentional charging of a non-rechargeable battery	(See appended table M)	P
	- Reverse charging of a rechargeable battery		N/A
	- Excessive discharging rate for any battery		N/A
M.3.3	Compliance ..... :		P
M.4	Additional safeguards for equipment containing secondary lithium battery		N/A
M.4.1	General		N/A
M.4.2	Charging safeguards		N/A
M.4.2.1	Charging operating limits		N/A
M.4.2.2a)	Charging voltage, current and temperature ..... :		—
M.4.2.2 b)	Single faults in charging circuitry ..... :		—
M.4.3	Fire Enclosure		N/A
M.4.4	Endurance of equipment containing a secondary lithium battery		N/A
M.4.4.2	Preparation		N/A
M.4.4.3	Drop and charge/discharge function tests		N/A
	Drop		N/A
	Charge		N/A
	Discharge		N/A
M.4.4.4	Charge-discharge cycle test		N/A
M.4.4.5	Result of charge-discharge cycle test		N/A
M.5	Risk of burn due to short circuit during carrying		N/A
M.5.1	Requirement		N/A
M.5.2	Compliance and Test Method (Test of P.2.3)		N/A
M.6	Prevention of short circuits and protection from other effects of electric current		N/A
M.6.1	Short circuits		N/A
M.6.1.1	General requirements		N/A
M.6.1.2	Test method to simulate an internal fault		N/A
M.6.1.3	Compliance (Specify M.6.1.2 or alternative method) ..... :		N/A
M.6.2	Leakage current (mA) ..... :		N/A
M.7	Risk of explosion from lead acid and NiCd batteries		N/A
M.7.1	Ventilation preventing explosive gas concentration		N/A

EN 62368-1/BS EN 62368/IEC 62368-1			
Clause	Requirement + Test	Result - Remark	Verdict
M.7.2	Compliance and test method		N/A
M.8	Protection against internal ignition from external spark sources of lead acid batteries		N/A
M.8.1	General requirements		N/A
M.8.2	Test method		N/A
M.8.2.1	General requirements		N/A
M.8.2.2	Estimation of hypothetical volume $V_z$ (m <sup>3</sup> /s)..... :		—
M.8.2.3	Correction factors..... :		—
M.8.2.4	Calculation of distance $d$ (mm) ..... :		—
M.9	Preventing electrolyte spillage		N/A
M.9.1	Protection from electrolyte spillage		N/A
M.9.2	Tray for preventing electrolyte spillage		N/A
M.10	Instructions to prevent reasonably foreseeable misuse (Determination of compliance: inspection, data review; or abnormal testing) ..... :		N/A
<b>N</b>	<b>ELECTROCHEMICAL POTENTIALS</b>		N/A
	Metal(s) used ..... :		—
<b>O</b>	<b>MEASUREMENT OF CREEPAGE DISTANCES AND CLEARANCES</b>		N/A
	Figures O.1 to O.20 of this Annex applied..... :		—
<b>P</b>	<b>SAFEGUARDS AGAINST ENTRY OF FOREIGN OBJECTS AND SPILLAGE OF INTERNAL LIQUIDS</b>		N/A
P.1	General requirements		N/A
P.2.2	Safeguards against entry of foreign object		N/A
	Location and Dimensions (mm) ..... :		—
P.2.3	Safeguard against the consequences of entry of foreign object		N/A
P.2.3.1	Safeguards against the entry of a foreign object		N/A
	Openings in transportable equipment		N/A
	Transportable equipment with metalized plastic parts ..... :		N/A
P.2.3.2	Openings in transportable equipment in relation to metallized parts of a barrier or enclosure (identification of supplementary safeguard) ..... :		N/A
P.3	Safeguards against spillage of internal liquids		N/A
P.3.1	General requirements		N/A
P.3.2	Determination of spillage consequences		N/A
P.3.3	Spillage safeguards		N/A

EN 62368-1/BS EN 62368/IEC 62368-1

Clause	Requirement + Test	Result - Remark	Verdict
P.3.4	Safeguards effectiveness		N/A
P.4	Metallized coatings and adhesive securing parts		N/A
P.4.2 a)	Conditioning testing		N/A
	Tc (°C)..... :		—
	Tr (°C) ..... :		—
	Ta (°C)..... :		—
P.4.2 b)	Abrasion testing ..... :		N/A
P.4.2 c)	Mechanical strength testing ..... :		N/A
<b>Q</b>	<b>CIRCUITS INTENDED FOR INTERCONNECTION WITH BUILDING WIRING</b>		N/A
Q.1	Limited power sources		N/A
Q.1.1 a)	Inherently limited output		N/A
Q.1.1 b)	Impedance limited output		N/A
	- Regulating network limited output under normal operating and simulated single fault condition		N/A
Q.1.1 c)	Overcurrent protective device limited output		N/A
Q.1.1 d)	IC current limiter complying with G.9		N/A
Q.1.2	Compliance and test method		N/A
Q.2	Test for external circuits – paired conductor cable		N/A
	Maximum output current (A) ..... :		—
	Current limiting method..... :		—
<b>R</b>	<b>LIMITED SHORT CIRCUIT TEST</b>		N/A
R.1	General requirements		N/A
R.2	Determination of the overcurrent protective device and circuit		N/A
R.3	Test method Supply voltage (V) and short-circuit current (A)). ..... :		N/A
<b>S</b>	<b>TESTS FOR RESISTANCE TO HEAT AND FIRE</b>		N/A
S.1	Flammability test for fire enclosures and fire barrier materials of equipment where the steady state power does not exceed 4 000 W		N/A
	Samples, material ..... :		—
	Wall thickness (mm)..... :		—
	Conditioning (°C)..... :		—
	Test flame according to IEC 60695-11-5 with conditions as set out		N/A
	- Material not consumed completely		N/A



EN 62368-1/BS EN 62368/IEC 62368-1			
Clause	Requirement + Test	Result - Remark	Verdict
	- Material extinguishes within 30s		N/A
	- No burning of layer or wrapping tissue		N/A
S.2	Flammability test for fire enclosure and fire barrier integrity		N/A
	Samples, material .....		—
	Wall thickness (mm).....		—
	Conditioning (°C).....		—
	Test flame according to IEC 60695-11-5 with conditions as set out		N/A
	Test specimen does not show any additional hole		N/A
S.3	Flammability test for the bottom of a fire enclosure		N/A
	Samples, material .....		—
	Wall thickness (mm).....		—
	Cheesecloth did not ignite		N/A
S.4	Flammability classification of materials		N/A
S.5	Flammability test for fire enclosures and fire barrier materials of equipment where the steady state power does not exceed 4 000 W		N/A
	Samples, material .....		—
	Wall thickness (mm).....		—
	Conditioning (test condition), (°C) .....		—
	Test flame according to IEC 60695-11-20 with conditions as set out		N/A
	After every test specimen was not consumed completely		N/A
	After fifth flame application, flame extinguished within 1 min		N/A
<b>T</b>	<b>MECHANICAL STRENGTH TESTS</b>		<b>P</b>
T.1	General requirements		P
T.2	Steady force test, 10 N .....		N/A
T.3	Steady force test, 30 N .....		N/A
T.4	Steady force test, 100 N .....		N/A
T.5	Steady force test, 250 N .....	(See appended table Annex T.5)	P
T.6	Enclosure impact test	500g, 1.3m, after test, no hazards.	P
	Fall test	Top side of enclosure	P

EN 62368-1/BS EN 62368/IEC 62368-1			
Clause	Requirement + Test	Result - Remark	Verdict
	Swing test	Four vertical sides of enclosure.	P
T.7	Drop test .....		N/A
T.8	Stress relief test .....	(See appended table Annex T.8)	P
T.9	Impact Test (glass)		N/A
T.9.1	General requirements		N/A
T.9.2	Impact test and compliance		N/A
	Impact energy (J).....		—
	Height (m) .....		—
T.10	Glass fragmentation test .....		N/A
T.11	Test for telescoping or rod antennas		N/A
	Torque value (Nm) .....		—
<b>U</b>	<b>MECHANICAL STRENGTH OF CATHODE RAY TUBES (CRT) AND PROTECTION AGAINST THE EFFECTS OF IMPLOSION</b>		N/A
U.1	General requirements		N/A
U.2	Compliance and test method for non-intrinsically protected CRTs		N/A
U.3	Protective Screen .....		N/A
<b>V</b>	<b>DETERMINATION OF ACCESSIBLE PARTS (FINGERS, PROBES AND WEDGES)</b>		N/A
V.1	Accessible parts of equipment		N/A
V.2	Accessible part criterion		N/A

EN 62368-1/BS EN 62368/IEC 62368-1			
Clause	Requirement + Test	Result - Remark	Verdict

IEC62368_1D - ATTACHMENT																																										
ATTACHMENT TO TEST REPORT																																										
IEC 62368-1																																										
EUROPEAN GROUP DIFFERENCES AND NATIONAL DIFFERENCES																																										
(Audio/video, information and communication technology equipment - Part 1: Safety requirements)																																										
<b>Differences according to</b> : EN 62368-1:2014+A11:2017																																										
<b>Attachment Form No.</b> : EU_GD_IEC62368_1D_II																																										
<b>Attachment Originator</b> : Nemko AS																																										
<b>Master Attachment</b> : Date 2021-02-04																																										
<b>Copyright © 2021 IEC System for Conformity Testing and Certification of Electrical Equipment (IECEE), Geneva, Switzerland. All rights reserved.</b>																																										
	<b>CENELEC COMMON MODIFICATIONS (EN)</b>					P																																				
	Clauses, subclauses, notes, tables, figures and annexes which are additional to those in IEC 62368-1:2014 are prefixed “Z”.					P																																				
CONTENTS	<b>Add</b> the following annexes: Annex ZA (normative) Normative references to international publications with their corresponding European publications Annex ZB (normative) Special national conditions Annex ZC (informative) A-deviations Annex ZD (informative) IEC and CENELEC code designations for flexible cords					P																																				
	<b>Delete</b> all the “country” notes in the reference document (IEC 62368-1:2014) according to the following list: <table><tr><td>0.2.1</td><td>Note</td><td>1</td><td>Note 3</td><td>4.1.15</td><td>Note</td></tr><tr><td>4.7.3</td><td>Note 1 and 2</td><td>5.2.2.2</td><td>Note</td><td>5.4.2.3.2.2 Table 13</td><td>Note c</td></tr><tr><td>5.4.2.3.2.4</td><td>Note 1 and 3</td><td>5.4.2.5</td><td>Note 2</td><td>5.4.5.1</td><td>Note</td></tr><tr><td>5.5.2.1</td><td>Note</td><td>5.5.6</td><td>Note</td><td>5.6.4.2.1</td><td>Note 2 and 3</td></tr><tr><td>5.7.5</td><td>Note</td><td>5.7.6.1</td><td>Note 1 and 2</td><td>10.2.1 Table 39</td><td>Note 2, 3 and 4</td></tr><tr><td>10.5.3</td><td>Note 2</td><td>10.6.2.1</td><td>Note 3</td><td>F.3.3.6</td><td>Note 3</td></tr></table>					0.2.1	Note	1	Note 3	4.1.15	Note	4.7.3	Note 1 and 2	5.2.2.2	Note	5.4.2.3.2.2 Table 13	Note c	5.4.2.3.2.4	Note 1 and 3	5.4.2.5	Note 2	5.4.5.1	Note	5.5.2.1	Note	5.5.6	Note	5.6.4.2.1	Note 2 and 3	5.7.5	Note	5.7.6.1	Note 1 and 2	10.2.1 Table 39	Note 2, 3 and 4	10.5.3	Note 2	10.6.2.1	Note 3	F.3.3.6	Note 3	P
0.2.1	Note	1	Note 3	4.1.15	Note																																					
4.7.3	Note 1 and 2	5.2.2.2	Note	5.4.2.3.2.2 Table 13	Note c																																					
5.4.2.3.2.4	Note 1 and 3	5.4.2.5	Note 2	5.4.5.1	Note																																					
5.5.2.1	Note	5.5.6	Note	5.6.4.2.1	Note 2 and 3																																					
5.7.5	Note	5.7.6.1	Note 1 and 2	10.2.1 Table 39	Note 2, 3 and 4																																					
10.5.3	Note 2	10.6.2.1	Note 3	F.3.3.6	Note 3																																					
	For special national conditions, see Annex ZB.					P																																				
1	<b>Add</b> the following note: NOTE Z1 The use of certain substances in electrical and electronic equipment is restricted within the EU: see Directive 2011/65/EU.					P																																				
4.Z1	<b>Add</b> the following new subclause after 4.9: To protect against excessive current, short-circuits and earth faults in circuits connected to an a.c.					N/A																																				

EN 62368-1/BS EN 62368/IEC 62368-1			
Clause	Requirement + Test	Result - Remark	Verdict
	<p><b>mains</b>, protective devices shall be included either as integral parts of the equipment or as parts of the building installation, subject to the following, a), b) and c):</p> <p>a) except as detailed in b) and c), protective devices necessary to comply with the requirements of B.3.1 and B.4 shall be included as parts of the equipment;</p> <p>b) for components in series with the mains input to the equipment such as the supply cord, appliance coupler, r.f.i. filter and switch, short-circuit and earth fault protection may be provided by protective devices in the building installation;</p> <p>c) it is permitted for <b>pluggable equipment type B</b> or <b>permanently connected equipment</b>, to rely on dedicated overcurrent and short-circuit protection in the building installation, provided that the means of protection, e.g. fuses or circuit breakers, is fully specified in the installation instructions.</p> <p>If reliance is placed on protection in the building installation, the installation instructions shall so state, except that for <b>pluggable equipment type A</b> the building installation shall be regarded as providing protection in accordance with the rating of the wall socket outlet.</p>		
5.4.2.3.2.4	<p><b>Add</b> the following to the end of this subclause: The requirement for interconnection with <b>external circuit</b> is in addition given in EN 50491-3:2009.</p>		N/A
10.2.1	<p>Add the following to <sup>c)</sup> and <sup>d)</sup> in table 39: For additional requirements, see 10.5.1.</p>		N/A
10.5.1	<p><b>Add</b> the following after the first paragraph: <i>For RS 1 compliance is checked by measurement under the following conditions: In addition to the normal operating conditions, all controls adjustable from the outside by hand, by any object such as a tool or a coin, and those internal adjustments or presets which are not locked in a reliable manner, are adjusted so as to give maximum radiation whilst maintaining an intelligible picture for 1 h, at the end of which the measurement is made.</i></p> <p>NOTE Z1 Soldered joints and paint lockings are examples of adequate locking.</p> <p><i>The dose-rate is determined by means of a radiation monitor with an effective area of 10 cm<sup>2</sup>, at any point 10 cm from the outer surface of the apparatus.</i></p>		N/A

EN 62368-1/BS EN 62368/IEC 62368-1			
Clause	Requirement + Test	Result - Remark	Verdict
	<p><i>Moreover, the measurement shall be made under fault conditions causing an increase of the high-voltage, provided an intelligible picture is maintained for 1 h, at the end of which the measurement is made.</i></p> <p><i>For RS1, the dose-rate shall not exceed 1 <math>\mu</math>Sv/h taking account of the background level.</i></p> <p>NOTE Z2 These values appear in Directive 96/29/Euratom of 13 May 1996.</p>		
10.6.1	<p><b>Add</b> the following paragraph to the end of the subclause:</p> <p>EN 71-1:2011, 4.20 and the related tests methods and measurement distances apply.</p>		N/A
10.Z1	<p><b>Add</b> the following new subclause after 10.6.5.</p> <p><b>10.Z1 Non-ionizing radiation from radio frequencies in the range 0 to 300 GHz</b></p> <p>The amount of non-ionizing radiation is regulated by European Council Recommendation 1999/519/EC of 12 July 1999 on the limitation of exposure of the general public to electromagnetic fields (0 Hz to 300 GHz).</p> <p>For intentional radiators, ICNIRP guidelines should be taken into account for Limiting Exposure to Time-Varying Electric, Magnetic, and Electromagnetic Fields (up to 300 GHz). For hand-held and body-mounted devices, attention is drawn to EN 50360 and EN 50566</p>		N/A
G.7.1	<p><b>Add</b> the following note:</p> <p>NOTE Z1 The harmonized code designations corresponding to the IEC cord types are given in Annex ZD.</p>		N/A
Bibliography	<p><b>Add</b> the following standards:</p> <p><b>Add</b> the following notes for the standards indicated:</p> <p>IEC 60130-9 NOTE Harmonized as EN 60130-9.</p> <p>IEC 60269-2 NOTE Harmonized as HD 60269-2.</p> <p>IEC 60309-1 NOTE Harmonized as EN 60309-1.</p> <p>IEC 60364 NOTE some parts harmonized in HD 384/HD 60364 series.</p> <p>IEC 60601-2-4 NOTE Harmonized as EN 60601-2-4.</p> <p>IEC 60664-5 NOTE Harmonized as EN 60664-5.</p> <p>IEC 61032:1997 NOTE Harmonized as EN 61032:1998 (not modified).</p> <p>IEC 61508-1 NOTE Harmonized as EN 61508-1.</p> <p>IEC 61558-2-1 NOTE Harmonized as EN 61558-2-1.</p> <p>IEC 61558-2-4 NOTE Harmonized as EN 61558-2-4.</p> <p>IEC 61558-2-6 NOTE Harmonized as EN 61558-2-6.</p> <p>IEC 61643-1 NOTE Harmonized as EN 61643-1.</p> <p>IEC 61643-21 NOTE Harmonized as EN 61643-21.</p> <p>IEC 61643-311 NOTE Harmonized as EN 61643-311.</p>		N/A

EN 62368-1/BS EN 62368/IEC 62368-1			
Clause	Requirement + Test	Result - Remark	Verdict
	IEC 61643-321 NOTE Harmonized as EN 61643-321. IEC 61643-331 NOTE Harmonized as EN 61643-331.		
<b>ZB</b>	<b>ANNEX ZB, SPECIAL NATIONAL CONDITIONS (EN)</b>		N/A
4.1.15	<p><b>Denmark, Finland, Norway and Sweden</b></p> <p>To the end of the subclause the following is added:</p> <p><b>Class I pluggable equipment type A</b> intended for connection to other equipment or a network shall, if safety relies on connection to reliable earthing or if surge suppressors are connected between the network terminals and <b>accessible</b> parts, have a marking stating that the equipment shall be connected to an earthed <b>mains</b> socket-outlet. The marking text in the applicable countries shall be as follows:</p> <p>In <b>Denmark</b>: "Apparatets stikprop skal tilsluttes en stikkontakt med jord som giver forbindelse til stikproppens jord."</p> <p>In <b>Finland</b>: "Laite on liitettävä suojakoskettimilla varustettuun pistorasiaan"</p> <p>In <b>Norway</b>: "Apparatet må tilkoples jordet stikkontakt"</p> <p>In <b>Sweden</b>: "Apparaten skall anslutas till jordat uttag"</p>		N/A
4.7.3	<p><b>United Kingdom</b></p> <p>To the end of the subclause the following is added:</p> <p>The torque test is performed using a socket-outlet complying with BS 1363, and the plug part shall be assessed to the relevant clauses of BS 1363. Also see Annex G.4.2 of this annex</p>		N/A
5.2.2.2	<p><b>Denmark</b></p> <p>After the 2nd paragraph add the following: A warning (marking <b>safeguard</b>) for high <b>touch current</b> is required if the <b>touch current</b> exceeds the limits of 3,5 mA a.c. or 10 mA d.c.</p>		N/A
5.4.11.1 and Annex G	<p><b>Finland and Sweden</b></p> <p>To the end of the subclause the following is added:</p> <p>For separation of the telecommunication network from earth the following is applicable: If this insulation is solid, including insulation forming part of a component, it shall at least consist of either</p> <ul style="list-style-type: none"> <li>• two layers of thin sheet material, each of which shall pass the electric strength test below, or</li> <li>• one layer having a distance through insulation of</li> </ul>		N/A

EN 62368-1/BS EN 62368/IEC 62368-1

Clause	Requirement + Test	Result - Remark	Verdict
	<p>at least 0,4 mm, which shall pass the electric strength test below.</p> <p>If this insulation forms part of a semiconductor component (e.g. an optocoupler), there is no distance through insulation requirement for the insulation consisting of an insulating compound completely filling the casing, so that clearances and creepage distances do not exist, if the component passes the electric strength test in accordance with the compliance clause below and in addition</p> <ul style="list-style-type: none"> <li>• passes the tests and inspection criteria of 5.4.8 with an electric strength test of 1,5 kV multiplied by 1,6 (the electric strength test of 5.4.9 shall be performed using 1,5 kV), and</li> <li>• is subject to routine testing for electric strength during manufacturing, using a test voltage of 1,5kV.</li> </ul> <p>It is permitted to bridge this insulation with a capacitor complying with EN 60384-14:2005, subclass Y2.</p> <p>A capacitor classified Y3 according to EN 60384-14:2005, may bridge this insulation under the following conditions:</p> <ul style="list-style-type: none"> <li>• the insulation requirements are satisfied by having a capacitor classified Y3 as defined by EN 60384-14, which in addition to the Y3 testing, is tested with an impulse test of 2,5 kV defined in 5.4.11;</li> <li>• the additional testing shall be performed on all the test specimens as described in EN 60384-14; the impulse test of 2,5 kV is to be performed before the endurance test in EN 60384-14, in the sequence of tests as described in EN 60384-14.</li> </ul>		
5.5.2.1	<p><b>Norway</b></p> <p>After the 3rd paragraph the following is added: Due to the IT power system used, capacitors are required to be rated for the applicable line-to-line voltage (230 V).</p>		N/A
5.5.6	<p><b>Finland, Norway and Sweden</b></p> <p>To the end of the subclause the following is added: Resistors used as <b>basic safeguard</b> or bridging <b>basic insulation</b> in <b>class I pluggable equipment type A</b> shall comply with G.10.1 and the test of G.10.2.</p>		N/A
5.6.1	<p><b>Denmark</b></p>		N/A



EN 62368-1/BS EN 62368/IEC 62368-1			
Clause	Requirement + Test	Result - Remark	Verdict
	<p><b>Add</b> to the end of the subclause</p> <p>Due to many existing installations where the socket-outlets can be protected with fuses with higher rating than the rating of the socket-outlets the protection for pluggable equipment type A shall be an integral part of the equipment.</p> <p><i>Justification:</i></p> <p>In Denmark an existing 13 A socket outlet can be protected by a 20 A fuse.</p>		
5.6.4.2.1	<p><b>Ireland and United Kingdom</b></p> <p>After the indent for <b>pluggable equipment type A</b>, the following is added:</p> <p>– the <b>protective current rating</b> is taken to be 13 A, this being the largest rating of fuse used in the <b>mains</b> plug.</p>		N/A
5.6.5.1	<p>To the second paragraph the following is added:</p> <p>The range of conductor sizes of flexible cords to be accepted by terminals for equipment with a rated current over 10 A and up to and including 13 A is:</p> <p>1,25 mm<sup>2</sup> to 1,5 mm<sup>2</sup> in cross-sectional area.</p>		N/A
5.7.5	<p><b>Denmark</b></p> <p>To the end of the subclause the following is added:</p> <p>The installation instruction shall be affixed to the equipment if the <b>protective conductor current</b> exceeds the limits of 3,5 mA a.c. or 10 mA d.c.</p>		N/A
5.7.6.1	<p><b>Norway and Sweden</b></p> <p>To the end of the subclause the following is added:</p> <p>The screen of the television distribution system is normally not earthed at the entrance of the building and there is normally no equipotential bonding system within the building. Therefore the protective earthing of the building installation needs to be isolated from the screen of a cable distribution system.</p> <p>It is however accepted to provide the insulation external to the equipment by an adapter or an interconnection cable with galvanic isolator, which may be provided by a retailer, for example.</p> <p>The user manual shall then have the following or similar information in Norwegian and Swedish language respectively, depending on in what country the equipment is intended to be used in:</p> <p>“Apparatus connected to the protective earthing of the building installation through the mains</p>		N/A



EN 62368-1/BS EN 62368/IEC 62368-1			
Clause	Requirement + Test	Result - Remark	Verdict
	<p>connection or through other apparatus with a connection to protective earthing – and to a television distribution system using coaxial cable, may in some circumstances create a fire hazard. Connection to a television distribution system therefore has to be provided through a device providing electrical isolation below a certain frequency range (galvanic isolator, see EN 60728-11)”</p> <p>NOTE In Norway, due to regulation for CATV-installations, and in Sweden, a galvanic isolator shall provide electrical insulation below 5 MHz. The insulation shall withstand a dielectric strength of 1,5 kV r.m.s., 50 Hz or 60 Hz, for 1 min.</p> <p>Translation to Norwegian (the Swedish text will also be accepted in Norway):  “Apparater som er koplet til beskyttelsesjord via nettplugg og/eller via annet jordtilkoplet utstyr – og er tilkoplet et koaksialbasert kabel-TV nett, kan forårsake brannfare. For å unngå dette skal det ved tilkopling av apparater til kabel-TV nett installeres en galvanisk isolator mellom apparatet og kabel-TV nettet.”</p> <p>Translation to Swedish:  “Apparater som är kopplad till skyddsjord via jordat vägguttag och/eller via annan utrustning och samtidigt är kopplad till kabel-TV nät kan i vissa fall medföra risk för brand. För att undvika detta skall vid anslutning av apparaten till kabel-TV nät galvanisk isolator finnas mellan apparaten och kabel-TV nätet.”.</p>		
5.7.6.2	<p><b>Denmark</b></p> <p>To the end of the subclause the following is added:</p> <p>The warning (marking safeguard) for high touch current is required if the touch current or the protective current exceed the limits of 3,5 mA .</p>		N/A
B.3.1 and B.4	<p><b>Ireland and United Kingdom</b></p> <p>The following is applicable:</p> <p>To protect against excessive currents and short-circuits in the primary circuit of <b>direct plug-in equipment</b>, tests according to Annexes B.3.1 and B.4 shall be conducted using an external miniature circuit breaker complying with EN 60898-1, Type B, rated 32A. If the equipment does not pass these tests, suitable protective devices shall be included</p>		N/A

EN 62368-1/BS EN 62368/IEC 62368-1			
Clause	Requirement + Test	Result - Remark	Verdict
	as an integral part of the <b>direct plug-in equipment</b> , until the requirements of Annexes B.3.1 and B.4 are met		
G.4.2	<p><b>Denmark</b></p> <p>To the end of the subclause the following is added:</p> <p>Supply cords of single phase appliances having a rated current not exceeding 13 A shall be provided with a plug according to DS 60884-2-D1:2011.</p> <p>CLASS I EQUIPMENT provided with socket-outlets with earth contacts or which are intended to be used in locations where protection against indirect contact is required according to the wiring rules shall be provided with a plug in accordance with standard sheet DK 2-1a or DK 2-5a.</p> <p>If a single-phase equipment having a RATED CURRENT exceeding 13 A or if a poly-phase equipment is provided with a supply cord with a plug, this plug shall be in accordance with the standard sheets DK 6-1a in DS 60884-2-D1 or EN 60309-2.</p> <p>Mains socket outlets intended for providing power to Class II apparatus with a rated current of 2,5 A shall be in accordance DS 60884-2-D1:2011 standard sheet DKA 1-4a.</p> <p>Other current rating socket outlets shall be in compliance with Standard Sheet DKA 1-3a or DKA 1-1c.</p> <p>Mains socket-outlets with earth shall be in compliance with DS 60884-2-D1:2011 Standard Sheet DK 1-3a, DK 1-1c, DK1-1d, DK 1-5a or DK 1-7a</p> <p><i>Justification:</i></p> <p>Heavy Current Regulations, Section 6c</p>		N/A
G.4.2	<p><b>United Kingdom</b></p> <p>To the end of the subclause the following is added:</p> <p>The plug part of direct plug-in equipment shall be assessed to BS 1363: Part 1, 12.1, 12.2, 12.3, 12.9, 12.11, 12.12, 12.13, 12.16, and 12.17, except that the test of 12.17 is performed at not less than 125 °C. Where the metal earth pin is replaced by an Insulated Shutter Opening Device (ISOD), the requirements of clauses 22.2 and 23 also apply.</p>		N/A
G.7.1	<p><b>United Kingdom</b></p> <p>To the first paragraph the following is added:</p>		N/A

EN 62368-1/BS EN 62368/IEC 62368-1			
Clause	Requirement + Test	Result - Remark	Verdict
	Equipment which is fitted with a flexible cable or cord and is designed to be connected to a mains socket conforming to BS 1363 by means of that flexible cable or cord shall be fitted with a 'standard plug' in accordance with the Plugs and Sockets etc (Safety) Regulations 1994, Statutory Instrument 1994 No. 1768, unless exempted by those regulations. NOTE "Standard plug" is defined in SI 1768:1994 and essentially means an approved plug conforming to BS 1363 or an approved conversion plug.		
G.7.1	<b>Ireland</b> To the first paragraph the following is added: Apparatus which is fitted with a flexible cable or cord shall be provided with a plug in accordance with Statutory Instrument 525: 1997, "13 A Plugs and Conversion Adapters for Domestic Use Regulations: 1997. S.I. 525 provides for the recognition of a standard of another Member State which is equivalent to the relevant Irish Standard		N/A
G.7.2	<b>Ireland and United Kingdom</b> To the first paragraph the following is added: A power supply cord with a conductor of 1,25 mm <sup>2</sup> is allowed for equipment which is rated over 10 A and up to and including 13 A.		N/A
ZC	<b>ANNEX ZC, NATIONAL DEVIATIONS (EN)</b>		N/A
10.5.2	<b>Germany</b> The following requirement applies: For the operation of any cathode ray tube intended for the display of visual images operating at an acceleration voltage exceeding 40 kV, authorization is required, or application of type approval (Bauartzulassung) and marking. <i>Justification:</i> German ministerial decree against ionizing radiation (Röntgenverordnung), in force since 2002-07-01, implementing the European Directive 96/29/EURATOM. <b>NOTE</b> Contact address: Physikalisch-Technische Bundesanstalt, Bundesallee 100, D-38116 Braunschweig, Tel.: Int +49-531-592-6320, Internet: <a href="http://www.ptb.de">http://www.ptb.de</a>		N/A

EN 62368-1/BS EN 62368/IEC 62368-1

Clause	Requirement + Test	Result - Remark	Verdict
--------	--------------------	-----------------	---------

4.1.2	TABLE: List of critical components (#)					P
Object / part No.	Manufacturer/ trademark	Type / model	Technical data	Standard	Mark(s) of conformity <sup>1</sup>	
Adapter (EU plug)	SHENZHEN HEWEISHUN NETWORK TECHNOLOGY CO.,LTD	BN031-A65051	Input: 100-240V~ 50/60Hz 1.5A, Output: 51Vdc,1.25A	IEC 62368-1: 2014(Second Edition) EN 62368-1: 2014 + A11: 2017	 Cert No.: DK-104550-UL Report No.: BTL-CB-1-S1505C202H	
Plug of power cord	Dongguan City Xin Hailin Wire and Cable Technology Co., Ltd.	LP-33	250V, 16A	DIN VDE 0620-2-1	VDE 40030668	
Connector of power cord	Dongguan City Xin Hailin Wire and Cable Technology Co., Ltd.	H05VV-F	300/500V 3*0.75mm <sup>2</sup>	DIN EN 50525-2-11 EN 50525-2-11:2011	VDE 40043059	
Power cord	Dongguan City Xin Hailin Wire and Cable Technology Co., Ltd.	LS-13	250V, 10A	EN 60320-1:2015	 35-105029	
Plastic enclosure	CHI MEI CORPORATION	PA-757(+)	HB, 80°C Min. thickness: 1.5mm	UL 94 UL 746	UL E56070	
(Alt.)	Interchangeable	Interchangeable	HB or better,80°C Min. thickness: 1.5mm	UL 94 UL 746	UL	
Metal enclosure	Interchangeable	Interchangeable	Min. thickness: 0.5mm	IEC 62368-1:2014 (Second Edition) EN 62368-1: 2014 + A11: 2017 BS EN 62368-1: 2014 + A11: 2017	Test with appliance	
PCB	Interchangeable	Interchangeable	Min. V-1, 105°C	UL 796 UL 94	UL	
Button cell	SHENZHEN PKCELL BATTERY CO.,LTD	CR1220	3V,40mAh	UL 1642	 Report No.: 60388366 001	

Supplementary information:

EN 62368-1/BS EN 62368/IEC 62368-1

Clause	Requirement + Test	Result - Remark	Verdict
--------	--------------------	-----------------	---------

(#): The information marked # is provided by the applicant, the laboratory is not responsible for its authenticity and this information can affect the validity of the result in the test report.

4.8.4, 4.8.5	TABLE: Lithium coin/button cell batteries mechanical tests			N/A
(The following mechanical tests are conducted in the sequence noted.)				
4.8.4.2	TABLE: Stress Relief test			—
Part		Material	Oven Temperature (°C)	Comments
--		--	--	--
4.8.4.3	TABLE: Battery replacement test			—
Battery part no. ....:		--	—	
Battery Installation/withdrawal		Battery Installation/Removal Cycle		Comments
--		1		--
		2		--
		3		--
		4		--
		5		--
		6		--
		8		--
		9		--
		10		--
4.8.4.4	TABLE: Drop test			—
Impact Area		Drop Distance	Drop No.	Observations
--		--	1	--
--		--	2	--
--		--	3	--
4.8.4.5	TABLE: Impact			—
Impacts per surface		Surface tested	Impact energy (Nm)	Comments
--		--	--	--
--		--	--	--
4.8.4.6	TABLE: Crush test			—
Test position		Surface tested	Crushing Force (N)	Duration force applied (s)
--		--	--	--

EN 62368-1/BS EN 62368/IEC 62368-1			
Clause	Requirement + Test	Result - Remark	Verdict

4.8.4, 4.8.5	TABLE: Lithium coin/button cell batteries mechanical tests	N/A
(The following mechanical tests are conducted in the sequence noted.)		
Supplementary information:		

<b>4.8.5</b>	<b>TABLE: Lithium coin/button cell batteries mechanical test result</b>			<b>N/A</b>
Test position	Surface tested	Force (N)	Duration force applied (s)	
--	--	--	--	
Supplementary information:				

5.2		Table: Classification of electrical energy sources					P
5.2.2.2 – Steady State Voltage and Current conditions							
No.	Supply Voltage	Location (e.g. circuit designation)	Test conditions	Parameters			ES Class
				U (Vrms or Vpk)	I (Apk or Arms)	Hz	
1	51V dc	Adapter output	Normal condition	51.0Vdc	--	--	ES1
			Abnormal condition	51.0Vdc	--	--	
			Single fault –R30 short circuit of adapter PCB	0	--	--	
2	12V dc	VDD54V_PoE output	Normal condition	12.0Vdc	--	--	ES1
			Abnormal condition	12.0Vdc	--	--	
			Single fault –C399 short circuit	0	--	--	
3	5V dc	5Vdc USB1 output	Normal condition	5.0Vdc	--	--	ES1
			Abnormal condition	5.0Vdc	--	--	
			Single fault –C77 short circuit	0	--	--	
4	5V dc	5Vdc USB2 output	Normal condition	5.0Vdc	--	--	ES1
			Abnormal condition	5.0Vdc	--	--	
			Single fault –C77 short circuit	0	--	--	

5.2.2.3 - Capacitance Limits					
No.	Supply	Location (e.g.	Test conditions	Parameters	ES Class

EN 62368-1/BS EN 62368/IEC 62368-1

Clause	Requirement + Test	Result - Remark	Verdict
--------	--------------------	-----------------	---------

	Voltage	circuit designation)		Capacitance, nF	Upk (V)	
--	--	--	Normal	--	--	--
			Abnormal	--	--	
			Single fault – SC/OC	--	--	

5.2.2.4 - Single Pulses

No.	Supply Voltage	Location (e.g. circuit designation)	Test conditions	Parameters			ES Class
				Duration (ms)	Upk (V)	Ipk (mA)	
--	--	--	Normal	--	--	--	--
			Abnormal	--	--	--	
			Single fault – SC/OC	--	--	--	

5.2.2.5 - Repetitive Pulses

No.	Supply Voltage	Location (e.g. circuit designation)	Test conditions	Parameters			ES Class
				Off time (ms)	Upk (V)	Ipk (mA)	
--	--	--	Normal	--	--	--	--
			Abnormal	--	--	--	
			Single fault – SC/OC	--	--	--	

Test Conditions: Normal – Abnormal -

Supplementary information:

--

5.4.1.4, 6.3.2, 9.0, B.2.6	TABLE: Temperature measurements					P
	Supply voltage (V) .....	51.0Vdc		--		—
	Ambient Tmin (°C) .....	22.0	Adjust to 40.0°C	--	--	—
	Ambient Tmax (°C) .....	23.3		--		—
	Tma (°C) .....	40.0		--		—
Maximum measured temperature T of part/at:		T (°C)				Allowed T <sub>max</sub> (°C)
Ambient		23.3	40.0	--	--	--
Internal surface of plastic		33.3	50.0	--	--	80

EN 62368-1/BS EN 62368/IEC 62368-1							
Clause	Requirement + Test			Result - Remark		Verdict	
PCB near U15	53.7	70.4	--	--		105	
PCB near U14	49.1	65.8	--	--		105	
PCB near U1	55.7	72.4	--	--		105	
PCB near U4	43.2	59.9	--	--		105	
PCB near USB	38.2	54.9	--	--		105	
Accessible parts surface(shift to 25°C)							
Ambient	23.3	25.0	--	--		--	
Top plastic enclosure	28.4	30.1	--	--		77 <sup>#</sup>	
Bottom metal enclosure	40.2	41.9	--	--		60 <sup>#</sup>	
Supplementary information:							
Temperature T of winding:	t <sub>1</sub> (°C)	R <sub>1</sub> (Ω)	t <sub>2</sub> (°C)	R <sub>2</sub> (Ω)	T (°C)	Allowed T <sub>max</sub> (°C)	Insulation class
--	--	--	--	--	--	--	--
--	--	--	--	--	--	--	--
Supplementary information:							
# The enclosure surfaces touched time for >1 s and < 10 s during normal use.							

5.4.1.8	Table: working voltage measurement			N/A
Location		RMS voltage (V)	Peak voltage (V)	Comments
--		--	--	--
--		--	--	--
--		--	--	--
supplementary information:				

5.4.1.10.2	TABLE: Vicat softening temperature of thermoplastics			N/A
Penetration (mm) :				—
Object/ Part No./Material		Manufacturer/t rademark	T softening (°C)	
--		--	--	
supplementary information:				

<b>5.4.1.10.3</b>	<b>TABLE: Ball pressure test of thermoplastics</b>			<b>N/A</b>
-------------------	--	--	--	------------



EN 62368-1/BS EN 62368/IEC 62368-1

Clause	Requirement + Test	Result - Remark	Verdict
--------	--------------------	-----------------	---------

Allowed impression diameter (mm)	:	≤ 2 mm	—
Object/Part No./Material	Manufacturer/trademark	Test temperature (°C)	Impression diameter (mm)
--	--	--	--
Supplementary information:			

<b>5.4.2.2, 5.4.2.4 and 5.4.3</b>	<b>TABLE: Minimum Clearances/Creepage distance</b>						<b>N/A</b>
Clearance (cl) and creepage distance (cr) at/of/between:	Up (V)	U r.m.s. (V)	Frequency (kHz) <sup>1</sup>	Required cl (mm)	cl (mm) <sup>2</sup>	Required <sup>3</sup> cr (mm)	cr (mm)
--	--	--	--	--	--	--	--
--	--	--	--	--	--	--	--
--	--	--	--	--	--	--	--
Supplementary information:							
Note 1: Only for frequency above 30 kHz							
Note 2: See table 5.4.2.4 if this is based on electric strength test							
Note 3: Provide Material Group							

5.4.2.3	TABLE: Minimum Clearances distances using required withstand voltage				N/A
	Overvoltage Category (OV):				I
	Pollution Degree:				
Clearance distanced between:		Required withstand voltage	Required cl (mm)	Measured cl (mm)	
--		--	--	--	
Supplementary information:					

5.4.2.4	TABLE: Clearances based on electric strength test				N/A
Test voltage applied between:		Required cl (mm)	Test voltage (kV) peak/ r.m.s. / d.c.	Breakdown Yes / No	
--		--	--	--	
--		--	--	--	
Supplementary information:					

EN 62368-1/BS EN 62368/IEC 62368-1			
Clause	Requirement + Test	Result - Remark	Verdict

<b>5.4.4.2, 5.4.4.5 c) 5.4.4.9</b>	<b>TABLE: Distance through insulation measurements</b>					<b>N/A</b>
Distance through insulation di at/of:	Peak voltage (V)	Frequency (kHz)	Material	Required DTI (mm)	DTI (mm)	
--	--	--	--	--	--	
--	--	--	--	--	--	
Supplementary information:						

5.4.9	TABLE: Electric strength tests			N/A
Test voltage applied between:		Voltage shape (AC, DC)	Test voltage (V)	Breakdown Yes / No
Functional:				
--		--	--	--
Reinforced:				
--		--	--	--
Supplementary information:				

<b>5.5.2.2</b>	<b>TABLE: Stored discharge on capacitors</b>					<b>N/A</b>
Supply Voltage (V), Hz	Test Location	Operating Condition (N, S)	Switch position On or off	Measured Voltage (after 2 seconds)	ES Classification	
--	--	--	--	--	--	
--	--	--	--	--	--	
Supplementary information:						
X-capacitors installed for testing are:						
<input type="checkbox"/> bleeding resistor rating:						
<input type="checkbox"/> ICX:						
Notes:						
A. Test Location:						
Phase to Neutral; Phase to Phase; Phase to Earth; and/or Neutral to Earth						
B. Operating condition abbreviations:						
N – Normal operating condition (e.g., normal operation, or open fuse); S –Single fault condition						

<b>5.6.6.2</b>	<b>TABLE: Resistance of protective conductors and terminations</b>				<b>N/A</b>
----------------	--	--	--	--	------------

EN 62368-1/BS EN 62368/IEC 62368-1

Clause	Requirement + Test	Result - Remark	Verdict
--------	--------------------	-----------------	---------

Accessible part	Test current (A)	Duration (min)	Voltage drop (V)	Resistance ( $\Omega$ )
--	--	--	--	--
--	--	--	--	--

Supplementary information:

<b>5.7.2.2, 5.7.4</b>	<b>TABLE: Earthed accessible conductive part</b>	<b>N/A</b>
-----------------------	--	------------

Supply voltage .....		—
Location	Test conditions specified in 6.1 of IEC 60990 or Fault Condition No in IEC 60990 clause 6.2.2.1 through 6.2.2.8, except for 6.2.2.7	Touch current (mA)
--	1	--
	2*	--
	3	--
	4	--
	5	--
	6	--

Supplementary Information:

Notes:

[1] Supply voltage is the anticipated maximum Touch Voltage

[2] Earthed neutral conductor [Voltage differences less than 1% or more]

[3] Specify method used for measurement as described in IEC 60990 sub-clause 4.3

[4] IEC60990, sub-clause 6.2.2.7, Fault 7 not applicable.

[5] (\*) IEC60990, sub-clause 6.2.2.2 is not applicable if switch or disconnect device (e.g., appliance coupler) provided.

<b>6.2.2</b>	<b>Table: Electrical power sources (PS) measurements for classification</b>				<b>P</b>
Source	Description	Measurement	Max Power after 3 s	Max Power after 5 s <sup>(*)</sup>	PS Classification
51Vdc	Adapter output (Normal condition)	Power (W) :	92.5	92.5	PS2
		V <sub>A</sub> (V) :	53.16	53.16	
		I <sub>A</sub> (A) :	1.74	1.74	
51Vdc	Adapter output (R30 short circuit of adapter PCB)	Power (W) :	0	--	PS1
		V <sub>A</sub> (V) :	0	--	
		I <sub>A</sub> (A) :	0	--	

EN 62368-1/BS EN 62368/IEC 62368-1

Clause	Requirement + Test		Result - Remark		Verdict
12Vdc	VDD54V_PoE output (Normal condition)	Power (W) :	40.25	40.25	PS2
		V <sub>A</sub> (V) :	14.74	14.74	
		I <sub>A</sub> (A) :	2.73	2.73	
12Vdc	VDD54V_PoE output (C399 short circuit)	Power (W) :	0	--	PS1
		V <sub>A</sub> (V) :	0	--	
		I <sub>A</sub> (A) :	0	--	
5Vdc	USB1 output (Normal condition)	Power (W) :	13.7	--	PS1
		V <sub>A</sub> (V) :	3.94	--	
		I <sub>A</sub> (A) :	3.47	--	
5Vdc	USB1 output (C77 short circuit)	Power (W) :	0	--	PS1
		V <sub>A</sub> (V) :	0	--	
		I <sub>A</sub> (A) :	0	--	
5Vdc	USB2 output (Normal condition)	Power (W) :	13.7	--	PS1
		V <sub>A</sub> (V) :	3.94	--	
		I <sub>A</sub> (A) :	3.47	--	
5Vdc	USB2 output (C77 short circuit)	Power (W) :	0	--	PS1
		V <sub>A</sub> (V) :	0	--	
		I <sub>A</sub> (A) :	0	--	
Supplementary Information:					
1. (*) Measurement taken only when limits at 3 seconds exceed PS1 limits.					

6.2.3.1	Table: Determination of Potential Ignition Sources (Arcing PIS)				N/A
Location	Open circuit voltage After 3 s (V <sub>p</sub> )	Measured r.m.s current (I <sub>rms</sub> )	Calculated value (V <sub>p</sub> x I <sub>rms</sub> )	Arcing PIS? Yes / No	
--	--	--	--	--	
--	--	--	--	--	
Supplementary information:					
An Arcing PIS requires a minimum of 50 V (peak) a.c. or d.c. An Arcing PIS is established when the product of the open circuit voltage (V <sub>p</sub> ) and normal operating condition rms current (I <sub>rms</sub> ) is greater than 15.					

<b>6.2.3.2</b>	<b>Table: Determination of Potential Ignition Sources (Resistive PIS)</b>				<b>P</b>
----------------	---	--	--	--	----------

EN 62368-1/BS EN 62368/IEC 62368-1

Clause	Requirement + Test	Result - Remark	Verdict
--------	--------------------	-----------------	---------

Circuit Location (x-y)	Operating Condition (Normal / Describe Single Fault)	Measured wattage or VA During first 30 s (W / VA)	Measured wattage or VA After 30 s (W / VA)	Protective Circuit, Regulator, or PTC Operated? Yes / No (Comment)	Resistive PIS? Yes/No
--	--	--	--	--	--
--	--	--	--	--	--

Supplementary Information: Adapter output has been classified as PS2 circuits, exist resistive PIS.

A combination of voltmeter, VA and ammeter IA may be used instead of a wattmeter.

If a separate voltmeter and ammeter are used, the product of (VA x IA) is used to determine Resistive PIS classification.

A Resistive PIS: (a) dissipates more than 15 W, measured after 30 s of normal operation, or (b) under single fault conditions has either a power exceeding 100 W measured immediately after the introduction of the fault if electronic circuits, regulators or PTC devices are used, or has an available power exceeding 15 W measured 30 s after introduction of the fault.

8.5.5	TABLE: High Pressure Lamp	N/A
Description	Values	Energy Source Classification
Lamp type.....:	--	—
Manufacturer .....	--	—
Cat no. ....:	--	—
Pressure (cold) (MPa).....:	--	MS_
Pressure (operating) (MPa) .....	--	MS_
Operating time (minutes) .....	--	—
Explosion method .....	--	—
Max particle length escaping enclosure (mm) .:	--	MS_
Max particle length beyond 1 m (mm).....:	--	MS_
Overall result .....	--	
Supplementary information:		

B.2.5	TABLE: Input test						P
U (V)	I (A)	I rated (A)	P (W)	P rated (W)	Fuse No	I fuse (A)	Condition/status
51.0V dc	1.03	1.25	--	--	--	--	Max normal operating condition ,VDD54V_PoE output load 40W and USB output load 0.5A.
Supplementary information:							

EN 62368-1/BS EN 62368/IEC 62368-1

Clause	Requirement + Test	Result - Remark	Verdict
--------	--------------------	-----------------	---------

--

B.3 & B.4		TABLE: Abnormal operating and fault condition tests						P
Ambient temperature (°C) :					23.2°C			—
Power source for EUT: Manufacturer, model/type, output rating:					See appended table B.2.5			—
Component No.	Abnormal Condition	Supply voltage (V)	Test time (ms)	Fuse No.	Fuse current (A)	T-couple	Temp. (°C)	Observation
RV3	Short circuit	51Vdc	30mins	--	--	--	--	Unit shutdown immediately, unrecoverable when fault condition removed, no hazard.
C214	Short circuit	51Vdc	30mins	--	--	--	--	Unit shutdown immediately, recoverable when fault condition removed, no hazard.
C216	Short circuit	51Vdc	30mins	--	--	--	--	Unit shutdown immediately, recoverable when fault condition removed, no hazard.
VDD54V_PoE (RJ2A) output	Overload	51Vdc	6hours	--	--	Ambient	23.8	The Max. output current up to 2.7A, output power is 8W, when over 2.71A port output shut down, others working normally, the temperature less than the limit of TS2. No hazards.
						Internal surface of plastic	33.7	
						PCB near U15	57.5	
						PCB near U14	51.0	
						PCB near U1	56.5	
						PCB near U4	44.1	
						PCB near USB	39.1	
						Top plastic enclosure	30.0	
						Bottom metal enclosure	41.1	
VDD54V_PoE	Short	51Vdc	6hours	--	--	Ambient	22.4	VDD54V_PoE(RJ2A)

EN 62368-1/BS EN 62368/IEC 62368-1								
Clause	Requirement + Test					Result - Remark		Verdict
(RJ2A) output	circuit					Internal surface of plastic	32.9	output short circuit, others working normally, the temperature less than the limit of TS2. No hazards.
						PCB near U15	60.8	
						PCB near U14	50.6	
						PCB near U1	56.1	
						PCB near U4	43.5	
						PCB near USB	38.3	
						Top plastic enclosure	28.5	
						Bottom metal enclosure	40.4	
USB1 output	Overload	51Vdc	6hours	--	--	Ambient	23.4	The Max. output current up to 2.5A, output power is 8W, when over 2.51A port output shut down, others working normally, the temperature less than the limit of TS2. No hazards.
						Internal surface of plastic	39.6	
						PCB near U15	73.0	
						PCB near U14	65.2	
						PCB near U1	67.5	
						PCB near U4	53.2	
						PCB near USB	48.0	
						Top plastic enclosure	31.7	
USB1 output	Short circuit	51Vdc	30mins	--	--	--	--	USB1 output shut down, no hazard.
USB2 output	Overload	51Vdc	6hours	--	--	Ambient	23.6	The Max. output current up to 2.5A, output power is 8W, when over 2.51A port output shut down, others working normally, the
						Internal surface of plastic	39.8	
						PCB near U15	73.2	

EN 62368-1/BS EN 62368/IEC 62368-1

Clause	Requirement + Test					Result - Remark		Verdict
						PCB near U14	65.4	temperature less than the limit of TS2. No hazards.
						PCB near U1	67.7	
						PCB near U4	53.4	
						PCB near USB	48.2	
						Top plastic enclosure	31.9	
						Bottom metal enclosure	49.1	
USB2 output	Short circuit	51Vdc	30mins	--	--	--	--	USB2 output shut down, no hazard.

Supplementary information:

The overload and short circuit test results of other POE devices are the same as the above results. The TS2 limit of top plastic enclosure are 87.0°C and the bottom metal enclosure is 70°C.

Test table is provided to record abnormal and fault conditions for all applicable energy sources including Thermal burn injury. Column "Abnormal/Fault." Specify if test condition by indicating "Abnormal" then the condition for a Clause B.3 test or "Single Fault" then the condition for Clause B.4.

1) SC: Short-circuited; OC: Open-circuited; OL: Overloaded; BL: Blocked.

2) The test result shown all safeguards remained effective and didn't lead to a single fault condition during abnormal operating condition; In addition all safeguards complied with applicable requirements in this standard after restoration of normal operating conditions.

Annex M	TABLE: Batteries								P	
The tests of Annex M are applicable only when appropriate battery data is not available									P	
Is it possible to install the battery in a reverse polarity position? :									N/A	
	Non-rechargeable batteries			Rechargeable batteries						
	Discharging		Un-intentional charging	Charging		Discharging		Reversed charging		
	Meas. current	Manuf. Specs.		Meas. current	Manuf. Specs.	Meas. current	Manuf. Specs.	Meas. current	Manuf. Specs.	
Max. current during normal condition	--	--	0	--	--	--	--	--	--	
Max. current during fault condition	--	--	0*	--	--	--	--	--	--	
*Single fault conditions: D15 or R92 for CR1220										

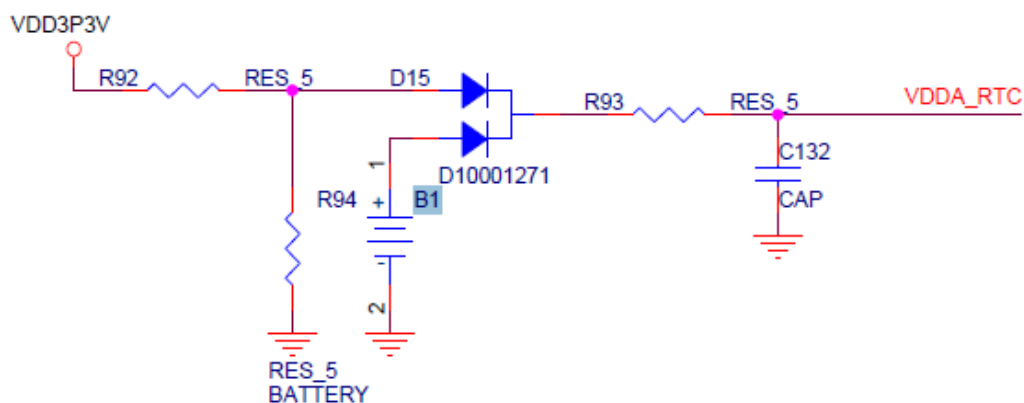


EN 62368-1/BS EN 62368/IEC 62368-1

Clause	Requirement + Test	Result - Remark	Verdict
--------	--------------------	-----------------	---------

Test results:		Verdict
- Chemical leaks		P
- Explosion of the battery		P
- Emission of flame or expulsion of molten metal		P
- Electric strength tests of equipment after completion of tests		N/A

Supplementary information:



Annex M.4	Table: Additional safeguards for equipment containing secondary lithium batteries	N/A
-----------	---	-----

Battery/Cell No.	Test conditions	Measurements			Observation
		U	I (A)	Temp (°C )	
--	--	--	--	--	--
--	--	--	--	--	--

Supplementary Information:

Battery identification	Charging at $T_{lowest}$ (°C)	Observation	Charging at $T_{highest}$ (°C)	Observation
--	--	--	--	--
--	--	--	--	--

Supplementary Information:

EN 62368-1/BS EN 62368/IEC 62368-1

Clause	Requirement + Test	Result - Remark	Verdict
--------	--------------------	-----------------	---------

<b>Annex Q.1</b>	<b>TABLE: Circuits intended for interconnection with building wiring (LPS)</b>	<b>N/A</b>
------------------	--	------------

Note: Measured UOC (V) with all load circuits disconnected:

Output Circuit	Components	U <sub>oc</sub> (V)	I <sub>sc</sub> (A)		S (VA)	
			Meas.	Limit	Meas.	Limit
-	--	--	--	--	--	--
--	--	--	--	--	--	--
Supplementary Information:						

T.2, T.3, T.4, T.5	TABLE: Steady force test					P
Part/Location	Material	Thickness (mm)	Force (N)	Test Duration (sec)	Observation	
Top enclosure	Plastic	Min. 1.5	250	5s	After test, no hazards	
Bottom enclosure	Metal	Min. 0.5	250	5s	After test, no hazards	
Side enclosure	Plastic	Min. 1.5	250	5s	After test, no hazards	
Supplementary information:						

T.6, T.9	TABLE: Impact tests				P
Part/Location	Material	Thickness (mm)	Vertical distance (mm)	Observation	
Horizontal	Plastic	Min. 1.5	1300	After test, no hazards	
Vertical	Plastic	Min. 1.5	1300	After test, no hazards	
Supplementary information:					

T.7	TABLE: Drop tests				N/A
Part/Location	Material	Thickness (mm)	Drop Height (mm)	Observation	
--	--	--	--	-	
--	--	--	--	-	
--	--	--	--	-	
Supplementary information:					

EN 62368-1/BS EN 62368/IEC 62368-1			
Clause	Requirement + Test	Result - Remark	Verdict

T.8	TABLE: Stress relief test					P
Part/Location	Material	Thickness (mm)	Oven Temperature (°C)	Duration (h)	Observation	
Plastic enclosure	Plastic	Min. 1.5	70	7.0	After test, no hazards	
Supplementary information:						

**Appendix A - EUT PHOTOS**

**EUT- Whole view**



**EUT- Top view**



EUT- Bottom view



EUT- Side view





EUT- Side view



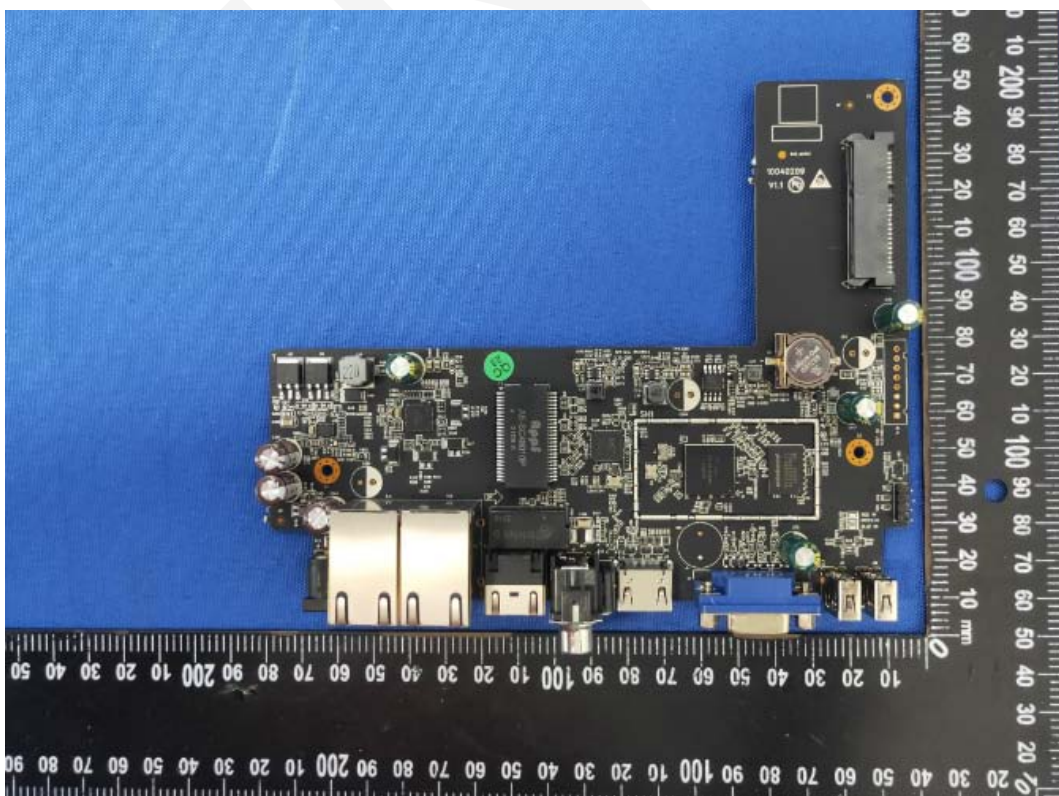
EUT- Side view



EUT- Uncover view

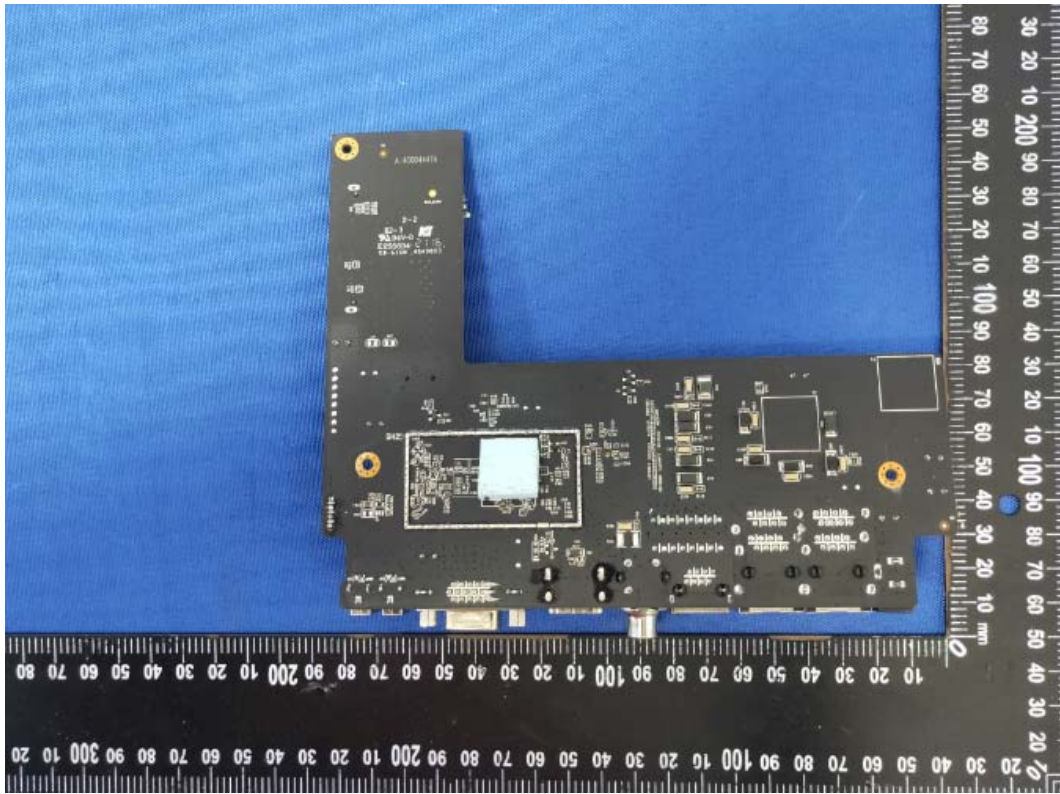


EUT- Top PCB view





EUT- Bottom PCB view



EUT- Adapter view





EUT- Adapter label view



### Directions

1. The information marked # is provided by the applicant, the laboratory is not responsible for its authenticity and this information can affect the validity of the result in the test report.
2. Unless otherwise stated the results shown in this test report refer only to the sample(s) tested.
3. Otherwise required by the applicant or Product Regulations, Decision Rule in this report did not consider the uncertainty.
4. The extended uncertainty given in this report is obtained by combining the standard uncertainty times the coverage factor K with the 95% confidence interval.
5. This report cannot be reproduced except in full, without prior written approval of the Company.
6. This report is valid only with a valid digital signature. The digital signature may be available only under the Adobe software above version 7.0.

**\*\*\*END OF REPORT\*\*\***